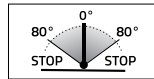
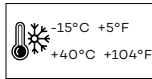
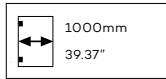
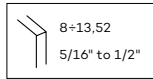


BL 8910 BILOBA



MAX 100 Kg - 220 lbs



• Cerniera oleodinamica con regolazione delle velocità di chiusura dell'anta e regolazione del punto 0. Stop a 0° +90° -90°. Adatta anche per porte in battuta.

• Hydraulic hinge with adjustment of the closing speed of the door and zero point adjustability. Stop at 0° +90° -90°. Suitable for doors with stop.



i Per porte di larghezza inferiore a 500 mm utilizzare art. BL 8910 + BL 8910 SOL. Versione da specificare in fase d'ordine e soggetta a possibili minimi d'ordine. Per ulteriori informazioni contattare l'ufficio commerciale.

For doors with width less than 500 mm use items BL 8910 + BL 8910 SOL. Version to be specified on being ordered and could be subjected to minimum quantity order. For further information contact the export department.

Testata 1.000.000 cicli - Tested for 1.000.000 cycles

! Aperture violente oltre i 95° potrebbero causare lo scardinamento. È consigliabile l'applicazione di un fermoporta. Violent opening further than 95° could unhinge the door. We suggest to install a door stop.

Classificazione secondo normativa - Clasificación según la ley - Classification according to int'l regulation Klassifizierung nach den Vorschriften - Classification selon la norme

UNI EN 1154 : 2006	3	8	2/5	0	1	4
--------------------	---	---	-----	---	---	---

