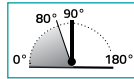
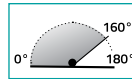


EVO
EV 835E50



EVO
EV 835E51



MAX **100 Kg - 220 lbs** → **Porte - Doors**

8±21.52
5/16" to 7/8"

800±1000mm
31.49" to 39.37"

-15°C +5°F
+40°C +104°F



• Cerniera oleodinamica vetro-vetro per porte in battuta, con velocità di chiusura regolabile e controllo costante di frenatura; permette un'apertura della porta fino a 180°. Si installa su porte con profilo in battuta. Profondità stipite da 30 a 50 mm.

• Hydraulic hinge glass to glass for doors with stop, with adjustable closing speed and constant braking control; the door opens up to 180°. Installed on doors with a profile on a stop. Jamb depth from 30 to 50 mm.

EV 835E50 R = destra - right

EV 835E50 L = sinistra - left

EV 835E51 R = destra - right

EV 835E51 L = sinistra - left



Alluminio / Aluminium : 02-05-13-14-15-16-17-RAL-62-88-95



Per installazioni in condizioni ambientali e climatiche particolari (es. Umide, acide, saline), consultare prima l'ufficio commerciale

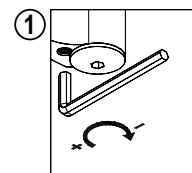
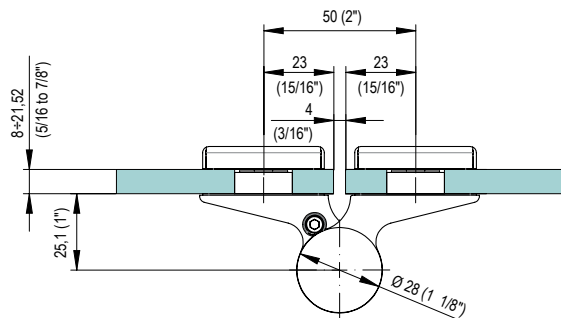
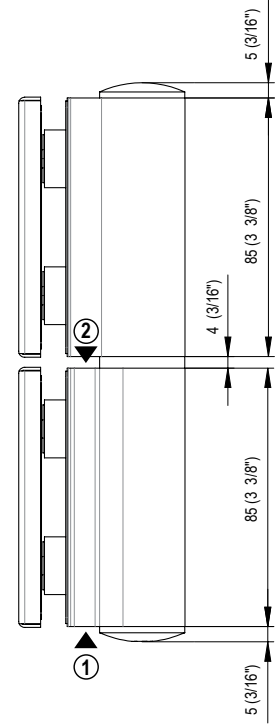
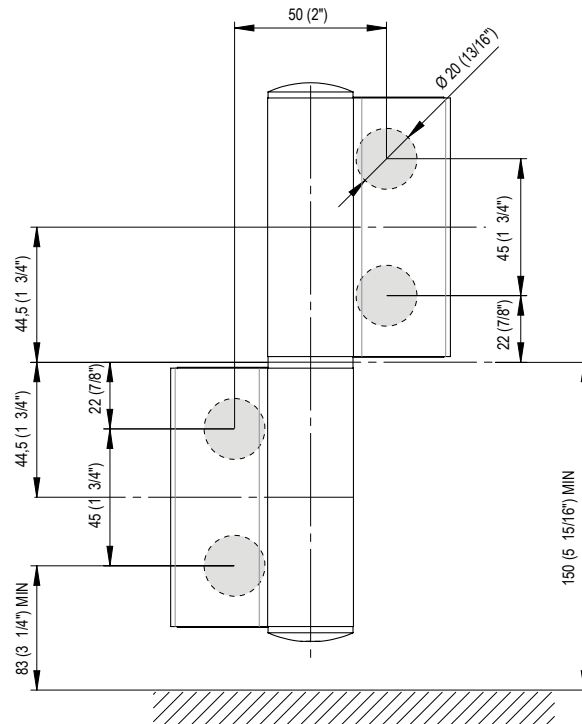
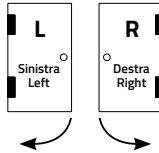
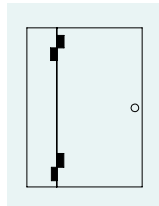
For installations in particular environments or climate (ex. Wet, acid, saline) consult sales office first



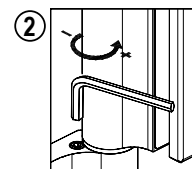
È necessaria una battuta in chiusura in quanto la cerniera ha una precarica.

The hinge is preloaded which makes an end stop necessary.

Classificazione secondo normativa - Clasificación según la ley - Classification according to int'l regulation - Klassifizierung nach den Vorschriften - Classification selon la norme				
UNI EN 1154 : 2006	3	8	3/6	0 1 4



Regolazione scatto finale
Ajuste del resorte final
Final latch adjustment
Regulierung der Endschloßung
Réglage de verrouillage final



Regolazione della velocità di chiusura
Ajuste de la velocidad de cierre
Closing speed adjustment
Regulierung der Schließgeschwindigkeit
Réglage de la vitesse de fermeture