

sistema oleodinamico / oildynamic system

# SLASH "The self-closing system for shower doors"



Pagina Page	Funzione Function	Modelli disponibili Available models	
da / from <b>400</b>			
da / from <b>404</b>			
da / from <b>408</b>			

**FINITURE DISPONIBILI**  
colours available



**BROCHURE**  
brochure



# SL D05E30N SLASH



**MAX** 80 Kg - 176 lbs

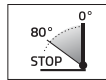
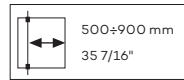
**Box doccia** - Shower boxes

## SL D05E30SOL *without stop* system FREE

DA SPECIFICARE ALL'ORDINE - SPECIFY AT TIME OF ORDER



**SL D05E30N/08**  
**SL D05E30SOL/08**



Alluminio / Aluminium: 47

• Kit Slash per box doccia in nicchia a tutta larghezza. Stop +90°.

• Slash niche set wall-wall. One door. Stop at 90°.

**!** È necessaria una battuta in chiusura in quanto la cerniera ha una precarica.  
The hinge is preloaded which makes an end stop necessary.

### 1 kit composto da / kit composed by

**OILDYNAMIC VERSION**

**D05E P16 (1X)**      **D05E P1347 (1X)**  
(vetro/glass 8-10mm)

OR

**FREE VERSION**

**D05E P17 (1X)**      **D05E P1347 (1X)**  
(vetro/glass 8-10mm)

**D05E P1447 (1X)**      **D05E P30N (1X)**      **D05E P90 (2X)**  
(vetro/glass 8-10mm)

+

### 2 necessario aggiungere / necessary to add

<p>Binario superiore Upper rail</p> <p><b>D05E P40/13</b> (1,25 mt) L ≤ 1300mm (630mm MIN) <b>D05E P40/18</b> (1,75 mt) L &gt; 1300mm (1800mm MAX) (1X)</p>	<p>Copri-binario superiore Upper rail cover</p> <p><b>D05E P45/09</b> (0,9 mt) (1X) L ≤ 900mm (2X) L &gt; 900mm</p>
---	---

+

### 3 scegli tra / choose between

Profilo a terra  
Ground profile

**D05E P55N/13** (1,3 mt)  
L ≤ 1300mm (630mm MIN)  
**D05E P55N/18** (1,8 mt)  
L > 1300mm (1800mm MAX)  
(1X)

Perno a terra  
Ground pin

**D05EP15** (1X)

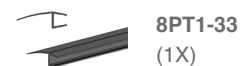
OR

Piastrina fissaggio a terra  
Ground fixing plate

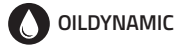
**D05E P52**  
(1X)

### OPTIONAL

Profilo deviatore antischiacciamento  
Seal against finger crush

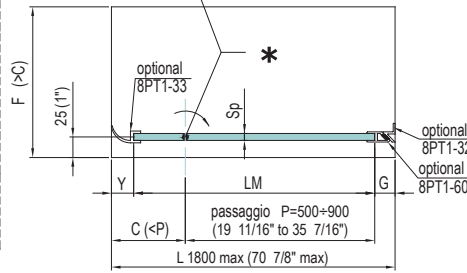
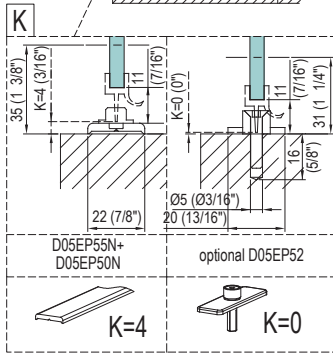
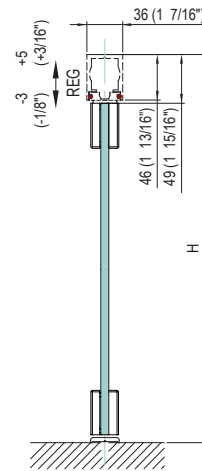
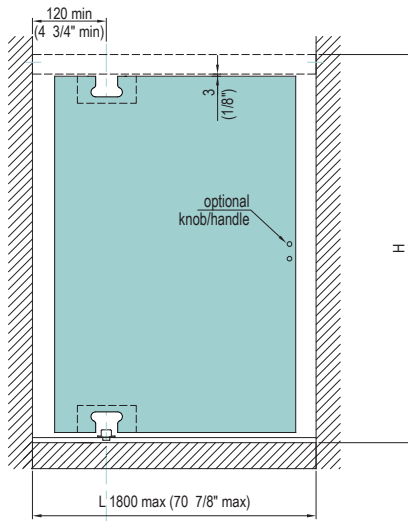
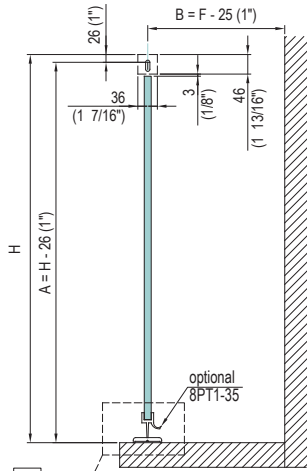


SL D05E30N SLASH



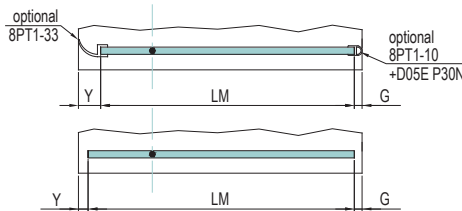
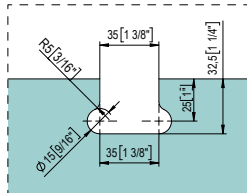
MAX 80 Kg - 176 lbs

Box doccia - Shower boxes

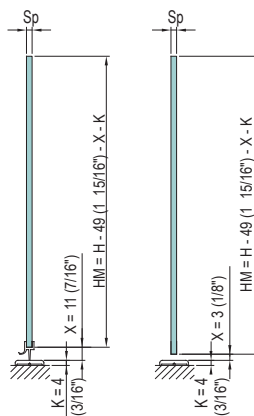
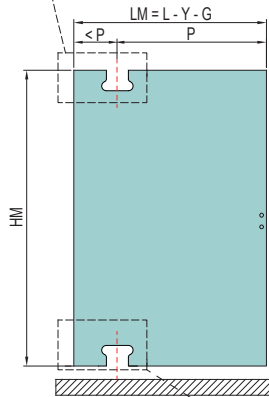


\* CENTRO DI ROTAZIONE  
ROTATION POINT

Sp	Y	G
8 (5/16")	18 (23/32")	17 (21/32")
10 (3/8")	18 (23/32")	20 (25/32")



Sp	Y	G
8 (5/16")	18 (23/32")	6 (1/4")
10 (3/8")	18 (23/32")	8 (5/16")



Sp	Y	G
8 (5/16")	3 (1/8")	3 (1/8")
10 (3/8")	3 (1/8")	3 (1/8")

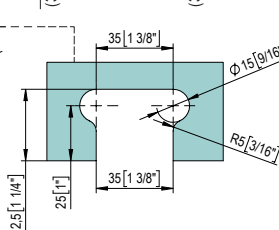
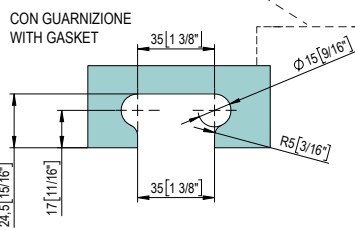
\*  
Definire il passaggio P voluto. Valutare il centro di rotazione e definire la larghezza LM totale.

Definir el pasaje P deseado. El centro de la vuelta de evaluar y definir el ancho total LM.

Define the desired passage P. Consider the rotation point and define the total width LM.

Den gewünschte Durchgang P definieren. Auf den Drehpunkt achten und die Gesamtbreite LM definieren.

Définir le passage P souhaité. Evaluer le centre de rotation et définir la largeur LM totale.



SENZA GUARNIZIONE  
WITHOUT GASKET

SLASH  
oleodinamica