

SWIVEL FITTINGS



Technical page for swivel fittings 6.2



SWIVEL FITTING, COUNTERSUNK HEAD

R 1001 6.4
R 1101 6.6



SWIVEL FITTING, CYLINDRICAL HEAD

R 1003 6.8
R 1003 Ø70 6.10
R 1005 6.12
R 1006 6.14



SWIVEL FITTING FOR INSTALLATION FROM THE OUTSIDE

R 1008 6.16
R 1038 6.18

SWIVEL FITTING, INSULATING GLASS UNIT

R 1001 A 6.20
R 1039 6.22
R 1003 A 6.24



SPECIAL SWIVEL FITTING

R 1019 6.26
R 1006TSSA 6.28
R 1103 6.30
R 1106 6.32
RC70 6.34
R 1006-M8 6.36



SWIVEL FITTING, LC

R 1001LC 6.38
R 1003LC 6.40
R 1006LC 6.42

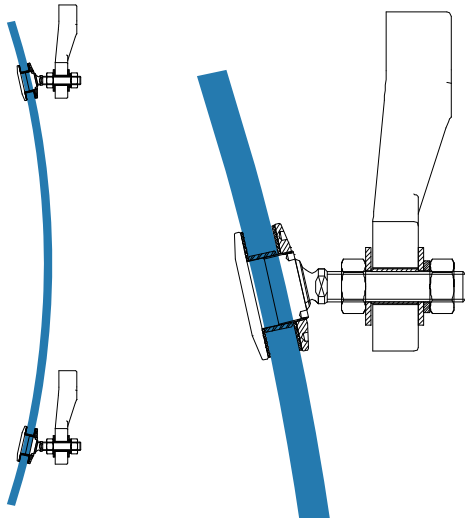
Options 6.44

Technical page for swivel fittings

Fixing of the glasses

The fixing piece plays a major role in the maintenance of the glasses. SADEV suggests two solutions to find the most adapted piece for your project.

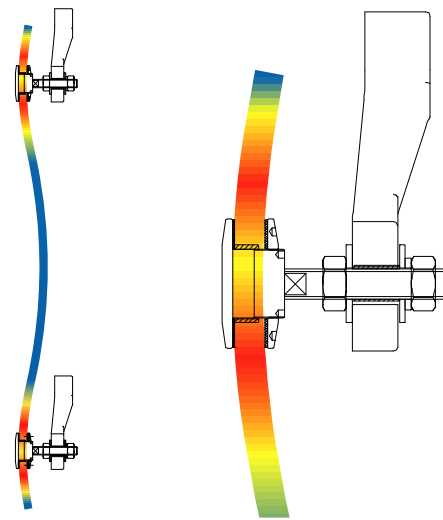
SWIVEL FITTING (FXR)



Advantages :

- Recovers the loads and the deformations of the glass, the Markore no stress in the glass.
- As the glass is not subjected to any stress, the glass thickness can be reduced.

FIXED BOLT (FXV)



Advantages :

- Product suitable for interior use.

Disadvantages :

- Recovers the loads but not the deformations of the glass, the Markore the stress in the glass increases with the applied loads.
- As the glass is under stress, the glass thickness has to be increased.

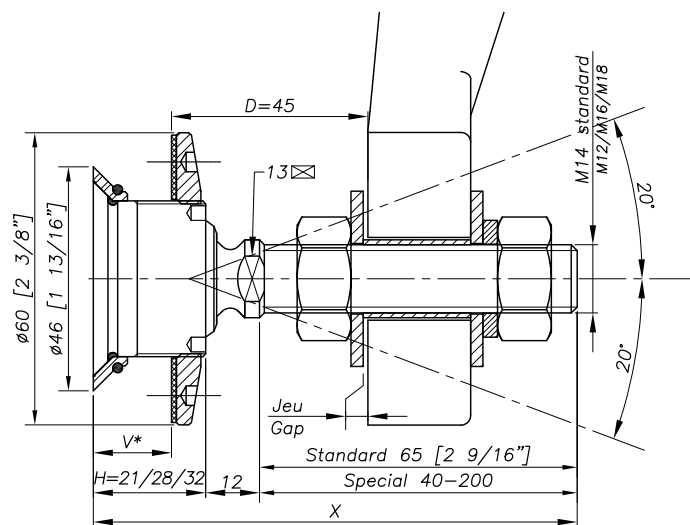
Standard dimensions

To be able to answer quickly and at the best cost according to your demand, SADEV proposes fittings with standard dimensions available in stock.

The standard dimensions are M14, length 65 mm, diameter 60 mm. Other dimensions are possible by customized fabrication. Mainly made out of stainless steel, the fittings are particularly resistant to corrosion and mechanical stress.

Because the security is a major part for this type of product, the most common fittings are subjected to a technical assessment delivered by the CSTB (French Research Institute for buildings). To ensure maximum reliability for these products, several different tests have been executed: pull out, bending of the threaded axle, water sealing and testing under seismic conditions.

Sadev products need a followed up and regular maintenance device (cleaning once a year). At this occasion, a point shall be made on the aging of the products and all suspicious signs shall be Markorted to SADEV (abnormal oxidation, defective montage etc.).

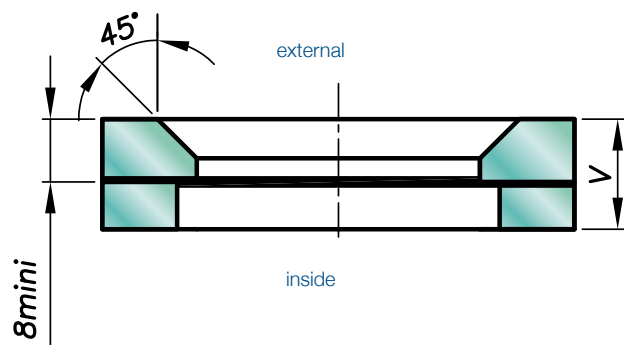


Note : the height H and the length X are validated by SADEV at the order confirmation.

Glass drilling

There are two main types of drillings: countersunk and cylindrical. The drilling drawings are included on all technical pages.

COUNTERSUNK DRILLING



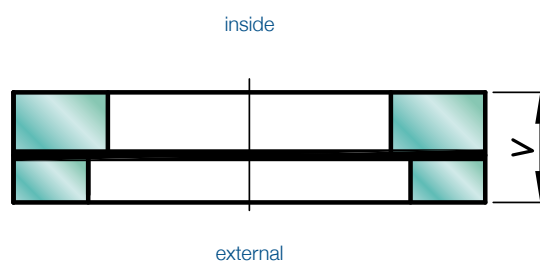
Advantages :

- Very esthetical as the head of the countersunk fitting is in the plane of the glass.
- Simplifies the cleaning of the glass.

Disadvantages :

- Highly unrecommended for glass roofs – verify the local regulatory.
- Make sure that your glass supplier is equipped for making countersunk holes in the glass.

CYLINDRICAL DRILLING



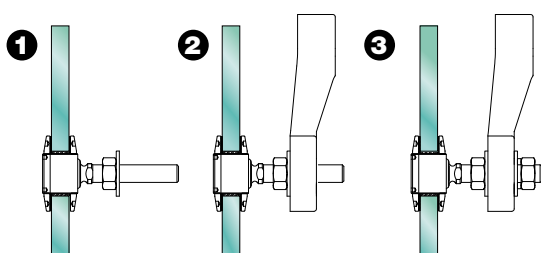
Advantages :

- No danger of mistaking the sense of the drilling.

Disadvantages :

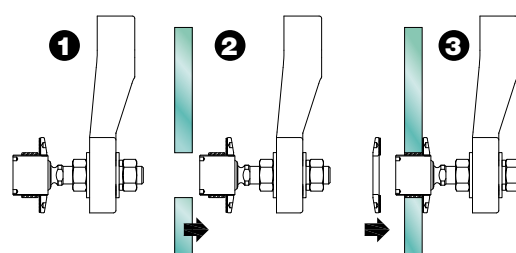
- The head of the fitting is not in the plane of the glass, resulting in a less harmonious render.

Mounting type « blind access »



Classical mounting

In this case, the point fitting is inserted into the glass. The glass assembly is then mounted onto the spiders.



« Blind access » mounting

This solution is used when it is impossible to access one side of the glass. The Markore, the fitting is mounted directly on the spider and the glass is installed afterwards.

R 1001

Designation : swivel fitting, countersunk head

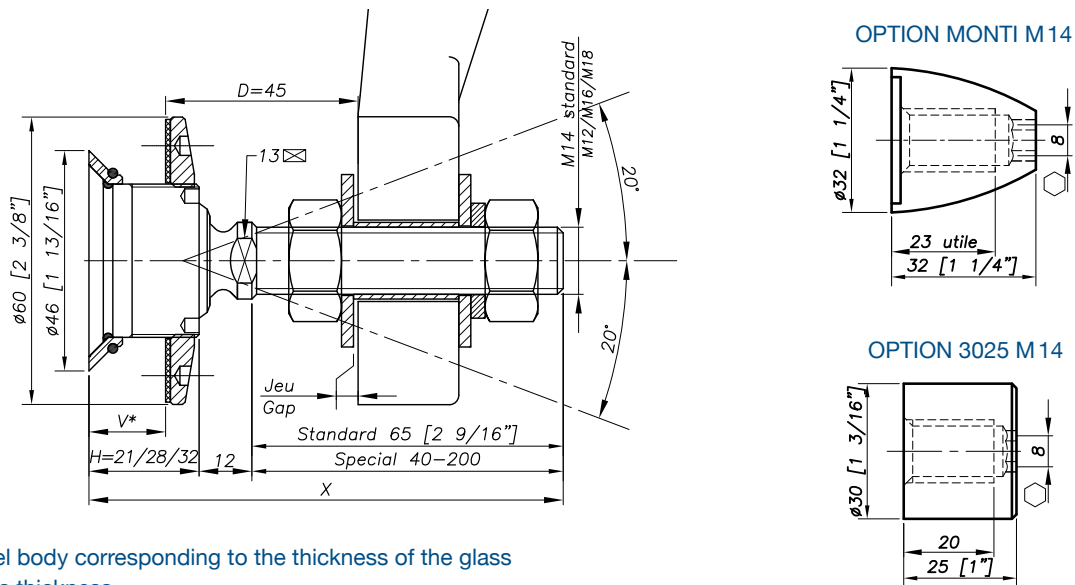


REFERENCE TO ORDER			
GLASS THICKNESS	Ø AXIS	LENGTH AXIS (mm)	ARTICLE CODE
$8 \leq V \leq 15$	M14	65	R1001-0815-1465*
$15 < V \leq 22$	M14	65	R1001-1522-1465
$22 < V \leq 26$	M14	65	R1001-2226-1465
SPECIAL	SPECIAL	SPECIAL	R1001-V-SP

Patent No : 9806556
 Technical assessment available online : www.sadev.com
 Sealing strip between glazing available p.8.26

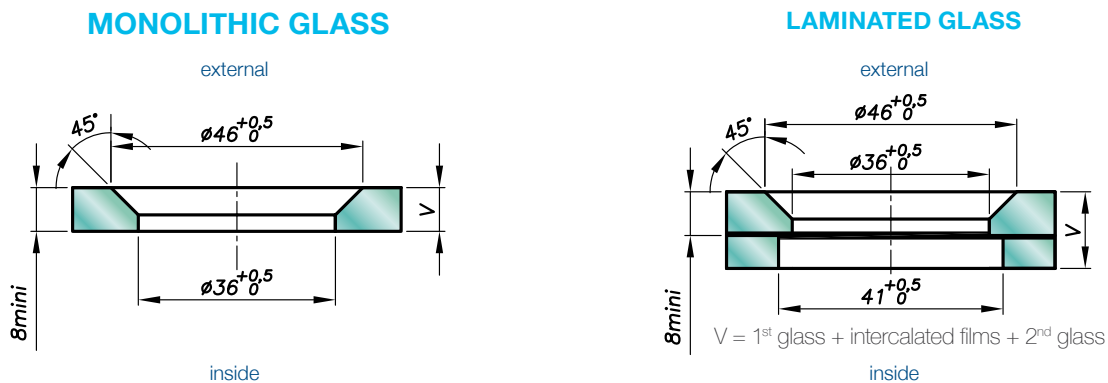
* R1001-0815-1465 : model - Glass Thickness - type axis and length.
 Seismic swivel fitting optional.

Dimensions



H = Swivel body corresponding to the thickness of the glass
 V * = glass thickness

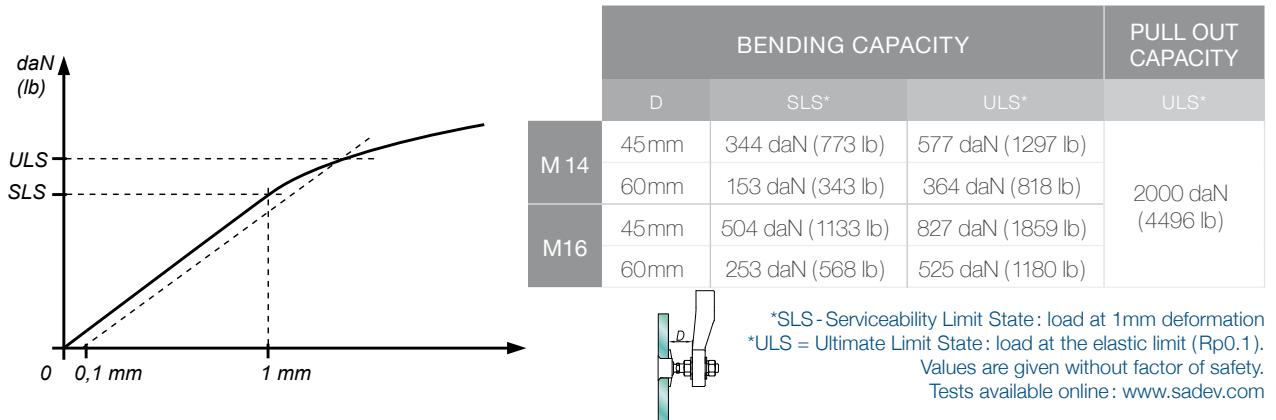
Glass drilling



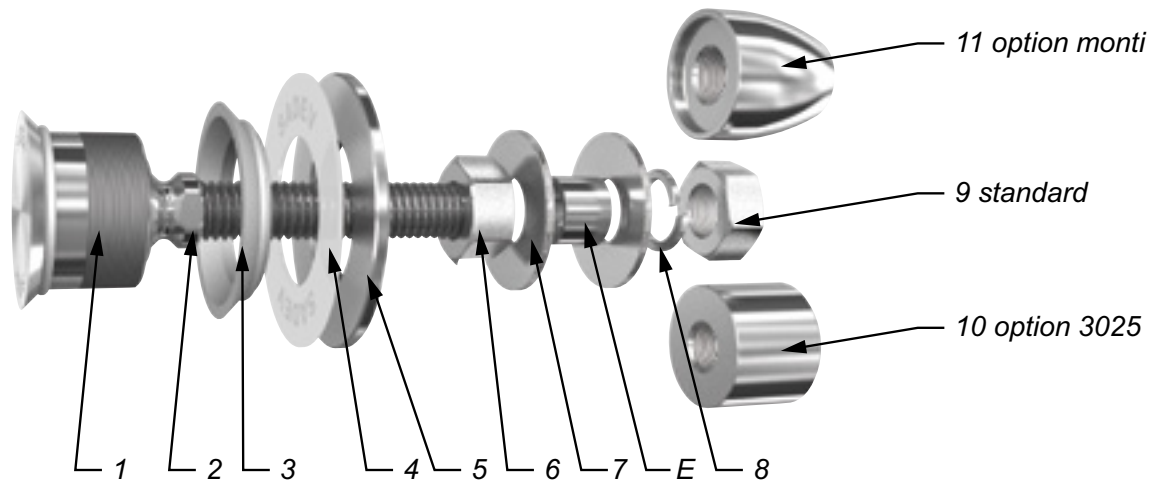
Available for glass thicknesses from 8 to 31.52 mm, for other thicknesses please consult us.

It is important to provide the following information with each request: the glass composition (ex.: 10 mm monolithic, 8.8.4 laminated, 8.8.2-12-10 insulating) / the length and diameter of the threaded axle if not standard dimensions (M14, 65 mm) / the reference of the spider to be used as support, or the thickness of an existing support for the delivery of the spacer.

Mechanical performance



Components



MARK	QUANTITY	DESIGNATION	MATERIAL
1	1	Swivel body	X2 Cr Ni Mo 17.12.2 as per EN 10088-3
2	1	Threaded Axle	X4 Cr Ni Mo 16.5.1 as per EN 10088-3
3	1	Glass Hole Grommet	AW-1050A as per EN 573-3 / Al 99.5%
4	1	Contact washer	White polyacetyl / white polyethylene
5	1	Glass Nut Ø60	X2 Cr Ni Mo 17.12.2 as per EN 10088-3
6	1	Nut DIN 934	A4
7	2	Washer	A4
8	1	Lock Lock washer DIN127	A4
9	1	Nut DIN 934	A4
10	1	3025 Cap Nut - Option	X2 Cr Ni Mo 17.12.2 as per EN 10088-3
11	1	Monti Cap Nut - Option	X2 Cr Ni Mo 17.12.2 as per EN 10088-3

Suggested mounting instruction

Insert parts N° 1/2 and 3 into the glass.

Mount contact washer N° 4 and nut N° 5 and tighten to 20Nm (15 ft-lb) for monolithic glass and 10Nm (7.5 ft-lb) for laminated glass using SADEV tools Mark. 097581160 and Mark. CLE-DYN-072031. Mount nut N° 6 and washer N° 7.

Insert the threaded axle into the support with spacer E (available on request), see technical page. Adjust the depth. Mount washer N° 7, lock washer N° 8, and nut N° 9. Tighten to 60Nm (45 ft-lb) using a 22 mm wrench.

SADEV recommends using thread locking compound whenever possible.

R 1101

Designation : swivel fitting, countersunk head

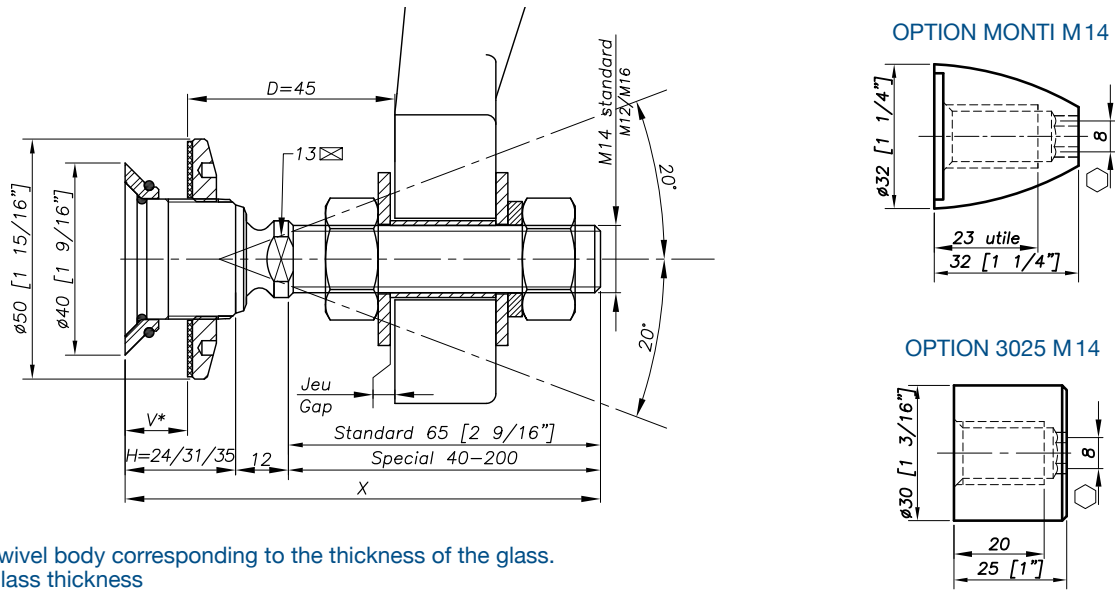


REFERENCE TO ORDER			
GLASS THICKNESS	Ø AXIS	LENGTH AXIS (mm)	ARTICLE CODE
$8 \leq V \leq 15$	M14	65	R1101-0815-1465*
$15 < V \leq 22$	M14	65	R1101-1522-1465
$22 < V \leq 26$	M14	65	R1101-2226-1465
SPECIAL	SPECIAL	SPECIAL	R1101-V-SP

Patent No : 9806556
 Technical assessment available online : www.sadev.com
 Sealing strip between glazing available p.8.26

* R1101-0815-1465 : Model - Glass thickness - Type axis and length.

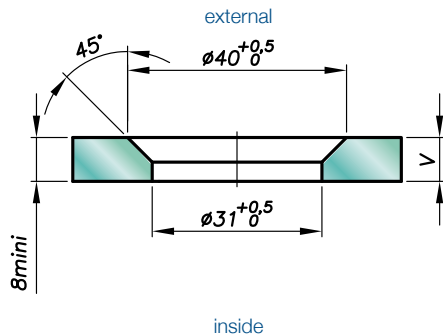
Dimensions



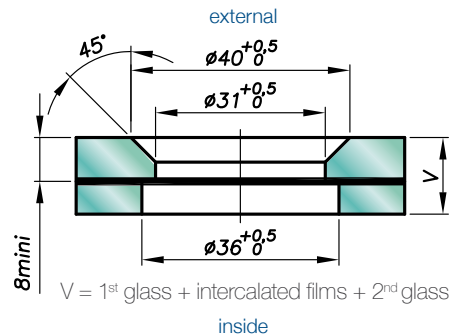
H = Swivel body corresponding to the thickness of the glass.
 V* = glass thickness

Glass drilling

MONOLITHIC GLASS



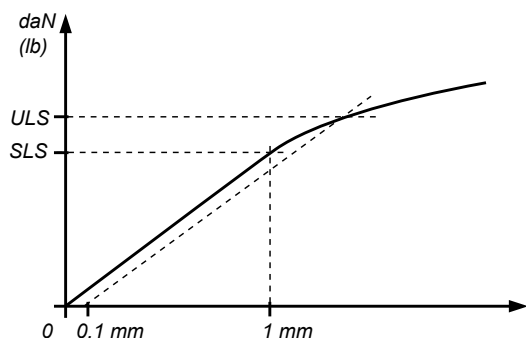
LAMINATED GLASS



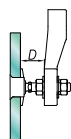
Available for glass thicknesses from 8 to 31.52 mm, for other thicknesses please consult us.

It is important to provide the following information with each request: the glass composition (ex.: 10 mm monolithic, 8.8.4 laminated, 8.8.2-12-10 insulating) / the length and diameter of the threaded axle if not standard dimensions (M14, 65 mm) / the reference of the spider to be used as support, or the thickness of an existing support for the delivery of the spacer.

Mechanical performance

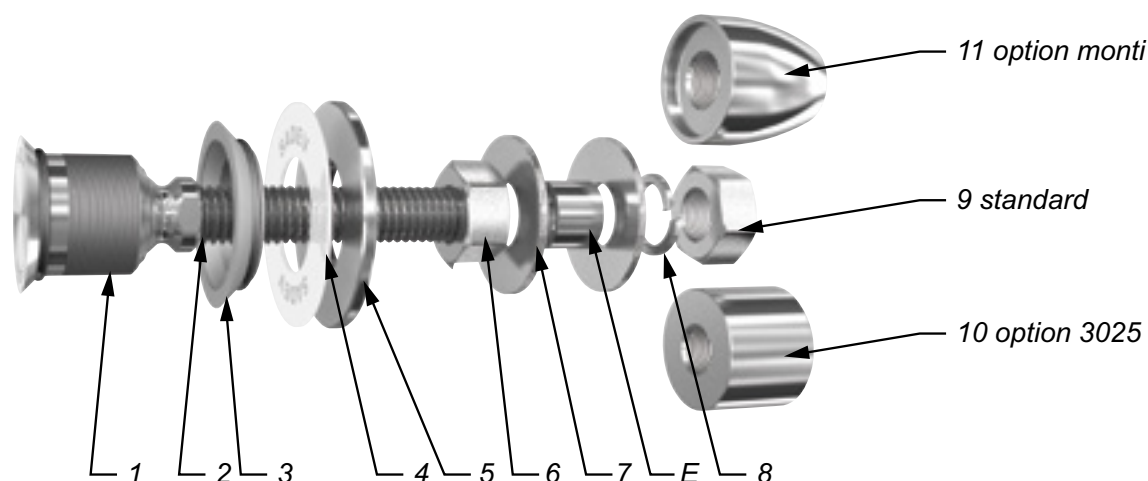


	BENDING CAPACITY			PULL OUT CAPACITY
	D	SLS*	ULS*	ULS*
M 14	45mm	344 daN (773 lb)	577 daN (1297 lb)	1 400 daN (3147 lb)
	60mm	153 daN (343 lb)	364 daN (818 lb)	
M16	45mm	504 daN (1133 lb)	827 daN (1859 lb)	
	60mm	253 daN (568 lb)	525 daN (1180 lb)	



*SLS - Serviceability Limit State: load at 1mm deformation
 *ULS = Ultimate Limit State: load at the elastic limit (Rp0.1).
 Values are given without factor of safety.
 Tests available online: www.sadev.com

Components



MARK	QUANTITY	DESIGNATION	MATERIAL
1	1	Swivel body	X2 Cr Ni Mo 17.12.2 as per EN 10088-3
2	1	Threaded Axle	X4 Cr Ni Mo 16.5.1 as per EN 10088-3
3	1	Glass hole grommet	AW-1050A as per EN 573-3/Al 99.5%
4	1	Contact washer	White polyacetyl/white polyethylene
5	1	Glass nut Ø50	X2 Cr Ni Mo 17.12.2 as per EN 10088-3
6	1	Nut DIN 934	A4
7	2	Washer	A4
8	1	Lock washer DIN127	A4
9	1	Nut DIN 934	A4
10	1	3025 Cap nut - Option	X2 Cr Ni Mo 17.12.2 as per EN 10088-3
11	1	Monti cap nut - Option	X2 Cr Ni Mo 17.12.2 as per EN 10088-3

Suggested mounting instruction

Insert parts N° 1/2 and 3 into the glass.

Mount contact washer N° 4 and nut N° 5 and tighten to 20Nm (15 ft-lb) for monolithic glass and 10Nm (7.5 ft-lb) for laminated glass using SADEV tools ref. 097581160 and ref. CLE-DYN-072031. Mount nut N° 6 and washer N° 7.

Insert the threaded axle into the support with spacer E (available on request), see technical page. Adjust the depth. Mount washer N° 7, lock washer N° 8, and nut N° 9. Tighten to 60Nm (45 ft-lb) using a 22 mm wrench.

SADEV recommends using thread locking compound whenever possible.

R 1003

Designation : swivel fitting, non-fluch countersunk head

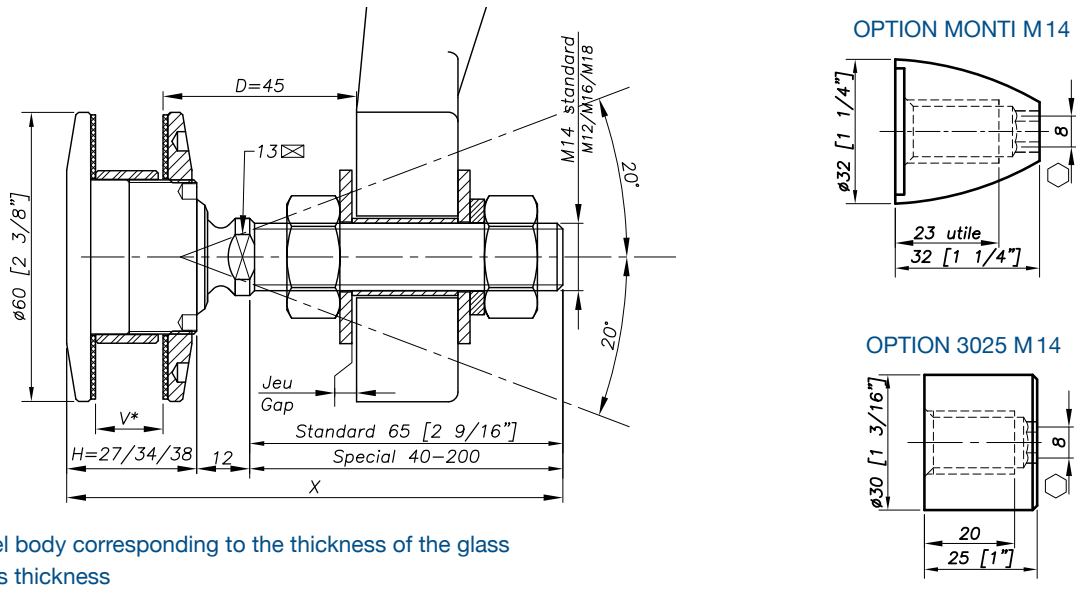


REFERENCE TO ORDER			
GLASS THICKNESS	Ø AXIS	LENGTH AXIS (mm)	ARTICLE CODE
$8 \leq V \leq 15$	M14	65	R1003-0815-1465*
$15 < V \leq 22$	M14	65	R1003-1522-1465
$22 < V \leq 26$	M14	65	R1003-2226-1465
SPECIAL	SPECIAL	SPECIAL	R1003-V-SP

Patent No : 9806556
 Technical assessment available online : www.sadev.com
 Sealing strip between glazing available p.8.26

*R1009-0815-1465 : Model - Glass thickness - type axis and length
 Seismic swivel fitting / BBR optional

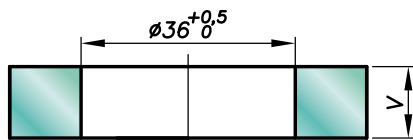
Dimensions



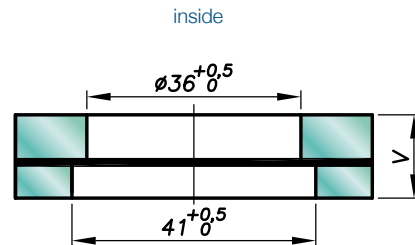
H = Swivel body corresponding to the thickness of the glass
 V * = glass thickness

Glass drilling

MONOLITHIC GLASS



LAMINATED GLASS

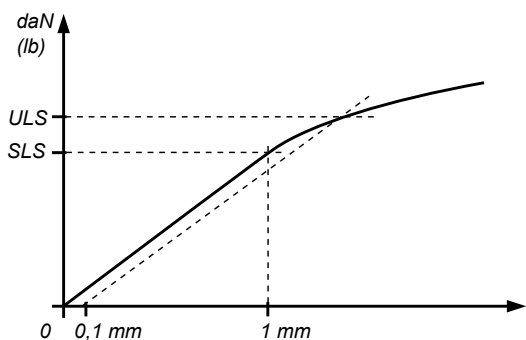


V = 1st glass + intercalated films + 2nd glass

Available for glass thicknesses from 8 to 31.52 mm, for other thicknesses please consult us.

It is important to provide the following information with each request: the glass composition (ex.: 10 mm monolithic, 8.8.4 laminated, 8.8.2-12-10 insulating) / the length and diameter of the threaded axle if not standard dimensions (M14, 65 mm) / the reference of the spider to be used as support, or the thickness of an existing support for the delivery of the spacer.

Mechanical performance

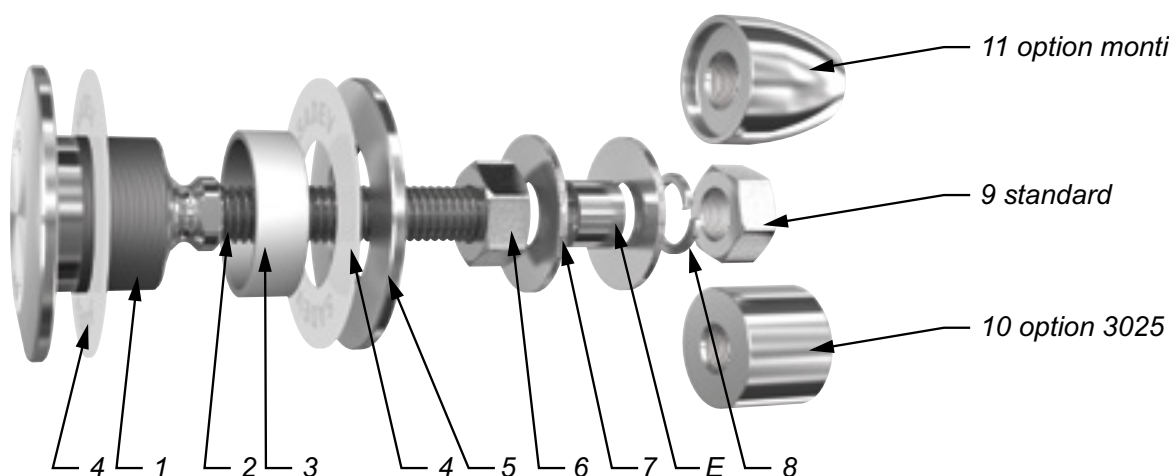


	BENDING CAPACITY			PULL OUT CAPACITY
	D	SLS*	ULS*	ULS*
M 14	45mm	344 daN (773 lb)	577 daN (1297 lb)	2000 daN (4496 lb)
	60mm	153 daN (343 lb)	364 daN (818 lb)	
M16	45mm	504 daN (1133 lb)	827 daN (1859 lb)	
	60mm	253 daN (568 lb)	525 daN (1180 lb)	



*SLS - Serviceability Limit State: load at 1mm deformation
 *ULS = Ultimate Limit State: load at the elastic limit (Rp0.1).
 Values are given without factor of safety.
 Tests available online: www.sadev.com

Components



MARK	QUANTITY	DESIGNATION	MATERIAL
1	1	Swivel body	X2 Cr Ni Mo 17.12.2 as per EN 10088-3
2	1	Threaded Axle	X4 Cr Ni Mo 16.5.1 as per EN 10088-3
3	1	Glass hole grommet	AW-1050A as per EN 573-3/Al 99.5%
4	2	Contact washer	White polyacetyl/white polyethylene
5	1	Glass nut Ø60	X2 Cr Ni Mo 17.12.2 as per EN 10088-3
6	1	Nut DIN 934	A4
7	2	Washer	A4
8	1	Lock washer DIN127	A4
9	1	Nut DIN 934	A4
10	1	3025 Cap nut - Option	X2 Cr Ni Mo 17.12.2 as per EN 10088-3
11	1	Monti cap nut - Option	X2 Cr Ni Mo 17.12.2 as per EN 10088-3

Suggested mounting instruction

Insert parts N° 1/2 , 4, and 3 into the glass.

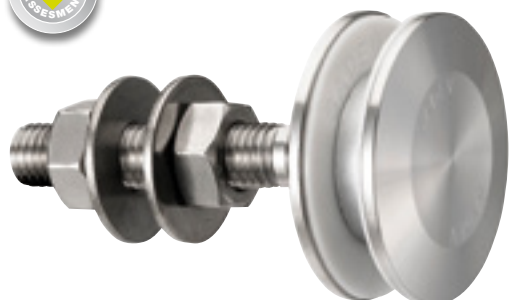
Mount contact washer N° 4 and nut N° 5 and tighten to 20Nm (15 ft-lb) for monolithic glass and 10Nm (7.5 ft-lb) for laminated glass using SADEV tools ref. 097581160 and ref. CLE-DYN-072031. Mount nut N° 6 and washer N° 7.

Insert the threaded axle into the support with spacer E (available on request), see technical page. Adjust the depth. Mount washer N° 7, lock washer N° 8, and nut N° 9. Tighten to 60Nm (45 ft-lb) using a 22 mm wrench.

SADEV recommends using thread locking compound whenever possible.

R 1003 Ø70

Designation : swivel fitting,
non-fluch cylindrical head, Ø70 mm

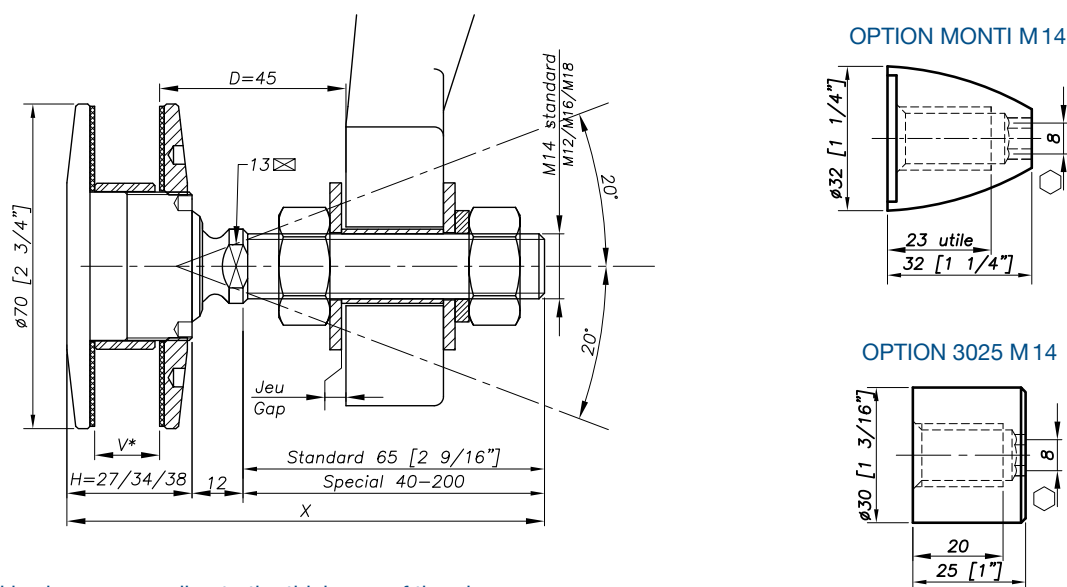


REFERENCE TO ORDER			
GLASS THICKNESS	Ø AXIS	LENGTH AXIS (mm)	ARTICLE CODE
$8 \leq V \leq 15$	M14	65	R1003-70-0815-1465*
$15 < V \leq 22$	M14	65	R1003-70-1522-1465
$22 < V \leq 26$	M14	65	R1003-70-2226-1465
SPECIAL	SPECIAL	SPECIAL	R1003-70-V-SP

Patent No : 9806556
 Technical assessment available online : www.sadev.com
 Sealing strip between glazing available p.8.26

* R1003-70-0815-1465 : Model - Glass thickness - Type axis and length.

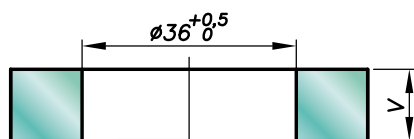
Dimensions



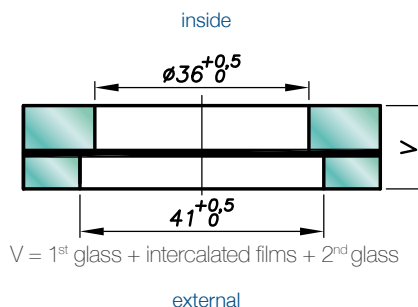
H = Swivel body corresponding to the thickness of the glass.
 V* = glass thickness

Glass drilling

MONOLITHIC GLASS



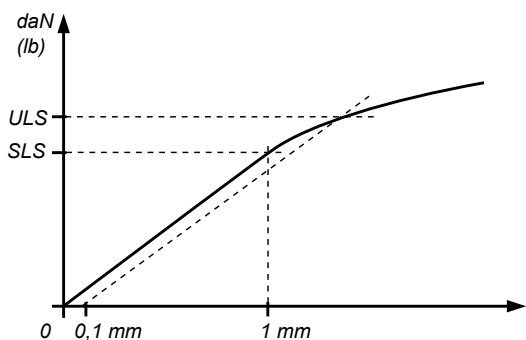
LAMINATED GLASS



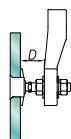
Available for glass thicknesses from 8 to 31.52 mm, for other thicknesses please consult us.

It is important to provide the following information with each request: the glass composition (ex.: 10 mm monolithic, 8.8.4 laminated, 8.8.2-12-10 insulating) / the length and diameter of the threaded axle if not standard dimensions (M14, 65 mm) / the reference of the spider to be used as support, or the thickness of an existing support for the delivery of the spacer.

Mechanical performance

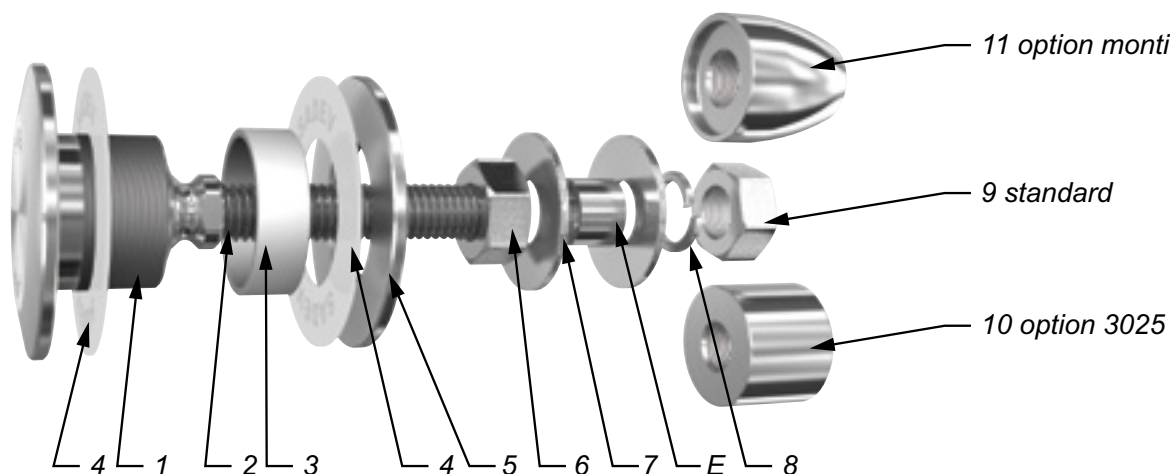


	BENDING CAPACITY			PULL OUT CAPACITY
	D	SLS*	ULS*	ULS*
M 14	45mm	344 daN (773 lb)	577 daN (1297 lb)	2000 daN (4496 lb)
	60mm	153 daN (343 lb)	364 daN (818 lb)	
M16	45mm	504 daN (1133 lb)	827 daN (1859 lb)	
	60mm	253 daN (568 lb)	525 daN (1180 lb)	



*SLS - Serviceability Limit State: load at 1mm deformation
 *ULS = Ultimate Limit State: load at the elastic limit (Rp0.1).
 Values are given without factor of safety.
 Tests available online: www.sadev.com

Components



MARK	QUANTITY	DESIGNATION	MATERIAL
1	1	Swivel body	X2 Cr Ni Mo 17.12.2 as per EN 10088-3
2	1	Threaded Axle	X4 Cr Ni Mo 16.5.1 as per EN 10088-3
3	1	Glass hole grommet	AW-1050A as per EN 573-3/Al 99.5%
4	2	Contact washer	White polyacetyl/white polyethylene
5	1	Glass nut Ø70	X2 Cr Ni Mo 17.12.2 as per EN 10088-3
6	1	Nut DIN 934	A4
7	2	Washer	A4
8	1	Lock washer DIN127	A4
9	1	Nut DIN 934	A4
10	1	3025 Cap nut - Option	X2 Cr Ni Mo 17.12.2 as per EN 10088-3
11	1	Monti cap nut - Option	X2 Cr Ni Mo 17.12.2 as per EN 10088-3

Suggested mounting instruction

Insert parts N° 1/2, 4, and 3 into the glass hole.

Mount the second contact washer N°4 and nut N°5 and tighten to 20Nm (15 ft-lb) for monolithic glass and 10Nm (7.5 ft-lb) for laminated glass using SADEV tools ref. 097581160 and ref. CLE-DYN-072031.

Thread on nut N°6 and apply washer N°7.

Insert the threaded axle into the support with spacer E (available on request), see technical page. Adjust the depth.

Mount the second washer N°7, lock washer N°8, and nut N°9. Tighten to 60Nm (45 ft-lb) using a 22 mm wrench.

SADEV recommends using thread locking compound whenever possible.

R 1005

Designation : swivel fitting Ø70, non-fluch, with flange and waterproof gusset

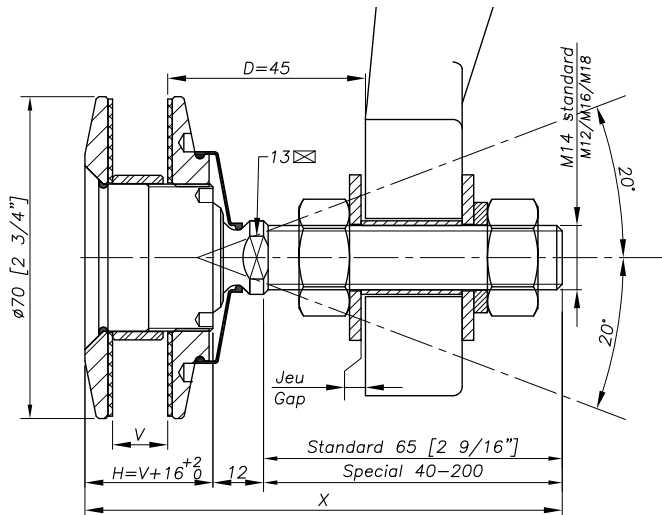


REFERENCE TO ORDER			
GLASS THICKNESS	Ø AXIS	LENGTH AXIS (mm)	ARTICLE CODE
Bespoke glass thickness	M14	65	R1005-V-1465*
SPECIAL	SPECIAL	SPECIAL	R1005-V-SP

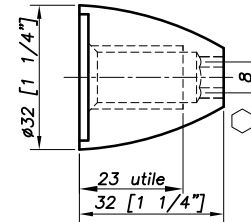
* R1005-V-1465 : Model - Glass thickness - Type axis and length.

Patent No : 9806556
 Technical assessment available online : www.sadev.com
 Sealing strip between glazing available p.8.26

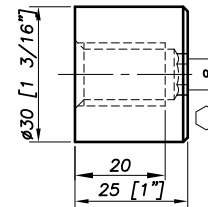
Dimensions



OPTION MONTI M 14



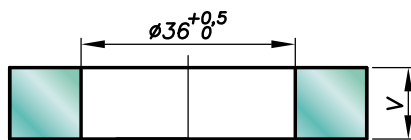
OPTION 3025 M 14



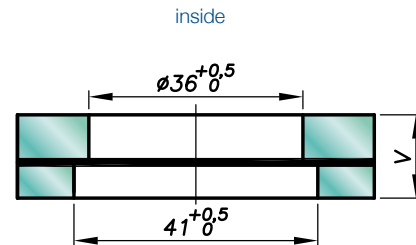
H = Swivel body corresponding to the thickness of the glass.
 V* = glass thickness

Glass drilling

MONOLITHIC GLASS



LAMINATED GLASS

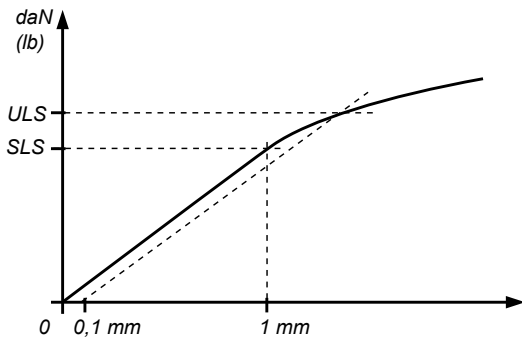


V = 1st glass + intercalated films + 2nd glass

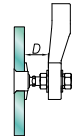
Available for glass thicknesses from 8 to 31.52 mm, for other thicknesses please consult us.

It is important to provide the following information with each request: the glass composition (ex.: 10 mm monolithic, 8.8.4 laminated, 8.8.2-12-10 insulating) / the length and diameter of the threaded axle if not standard dimensions (M14, 65 mm) / the reference of the spider to be used as support, or the thickness of an existing support for the delivery of the spacer.

Mechanical performance

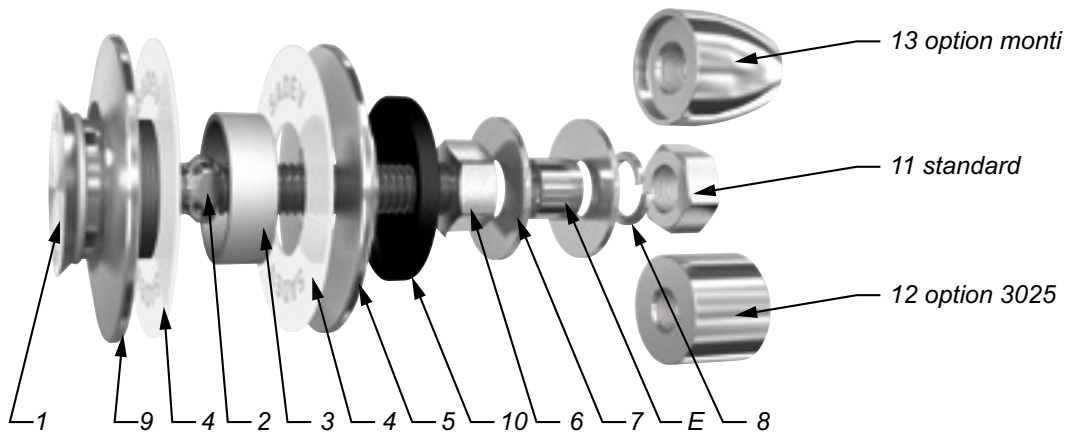


	BENDING CAPACITY			PULL OUT CAPACITY
	D	SLS*	ULS*	ULS*
M 14	45mm	344 daN (773 lb)	577 daN (1297 lb)	2000 daN (4496 lb)
	60mm	153 daN (343 lb)	364 daN (818 lb)	
M16	45mm	504 daN (1133 lb)	827 daN (1859 lb)	
	60mm	253 daN (568 lb)	525 daN (1180 lb)	



*SLS - Serviceability Limit State: load at 1mm deformation
 *ULS = Ultimate Limit State: load at the elastic limit (Rp0.1).
 Values are given without factor of safety.
 Tests available online: www.sadev.com

Components



MARK	QUANTITY	DESIGNATION	MATERIAL
1	1	Swivel body	X2 Cr Ni Mo 17.12.2 as per EN 10088-3
2	1	Threaded Axle	X4 Cr Ni Mo 16.5.1 as per EN 10088-3
3	1	Glass hole grommet	AW-1050A as per EN 573-3/Al 99.5%
4	2	Contact washer	White polyacetyl/white polyethylene
5	1	Glass nut Ø 70	X2 Cr Ni Mo 17.12.2 as per EN 10088-3
6	1	Nut DIN 934	A4
7	2	Washer	A4
8	1	Lock washer DIN127	A4
9	1	Outer disk Ø 70	X5 Cr Ni Mo 17.12.2 as per EN 10088-3
10	1	Silicone cover	Silicone 60 Shores
11	1	Nut DIN 934	A4
12	1	3025 Cap nut - Option	X2 Cr Ni Mo 17.12.2 as per EN 10088-3
13	1	Monti cap nut - Option	X2 Cr Ni Mo 17.12.2 as per EN 10088-3

Suggested mounting instruction

Insert parts N° 1/2, 9, 4, and 3 into the glass hole.

Mount the second contact washer N° 4 and nut N° 5 and tighten to 20Nm (15 ft-lb) for monolithic glass and 10Nm (7.5 ft-lb) for laminated glass using SADEV tools ref. 097581160 and ref. CLE-DYN-072031.

Ensure that the silicone cover N° 10 is secured and not stretched too tightly or it may come loose.

Thread on nut N° 6 and apply washer N° 7.

Insert the threaded axle into the support with spacer E (available on request), see technical page. Adjust the depth. Mount the second washer N° 7, lock washer N° 8, and nut N° 11. Tighten to 60Nm or (45 ft-lb) using a 22 mm wrench.

SADEV recommends using thread locking compound whenever possible.

R 1006

Designation : swivel fitting, non-fluch countersunk head for installation from the outside

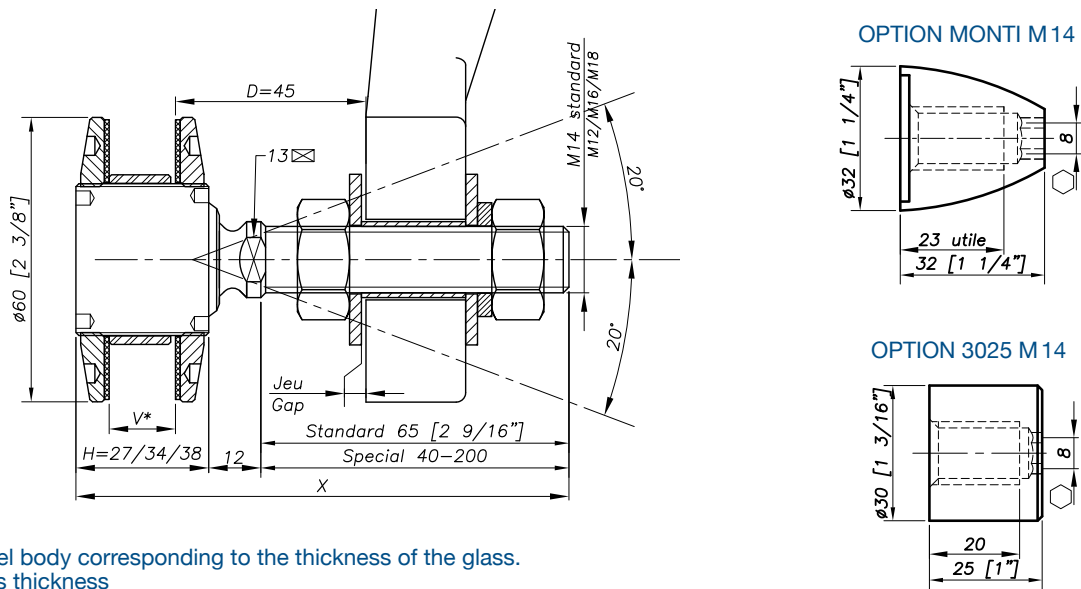


REFERENCE TO ORDER			
GLASS THICKNESS	Ø AXIS	LENGTH AXIS (mm)	ARTICLE CODE
$8 \leq V \leq 15$	M14	65	R1006-0815-1465*
$15 < V \leq 22$	M14	65	R1006-1522-1465
$22 < V \leq 26$	M14	65	R1006-2226-1465
SPECIAL	SPECIAL	SPECIAL	R1006-V-SP

Patent No : 9806556
 Technical assessment available online : www.sadev.com
 Sealing strip between glazing available p.8.26

* R1006-0815-1465 : Model - Glass thickness - Type axis and length.
 Seismic swivel fitting optional

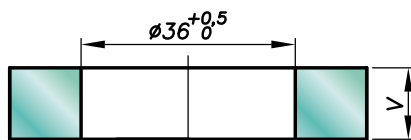
Dimensions



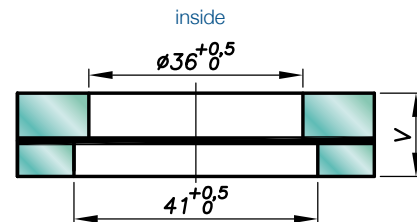
H = Swivel body corresponding to the thickness of the glass.
 V* = glass thickness

Glass drilling

MONOLITHIC GLASS



LAMINATED GLASS

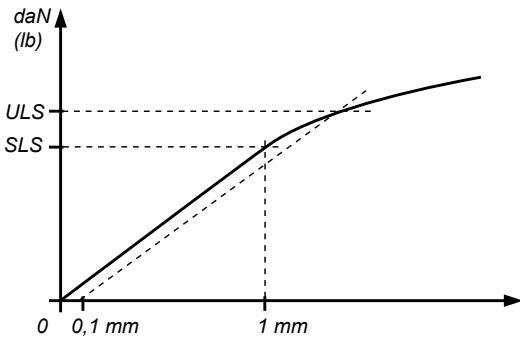


V = 1st glass + intercalated films + 2nd glass
 external

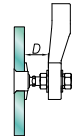
Available for glass thicknesses from 8 to 31.52 mm, for other thicknesses please consult us.

It is important to provide the following information with each request: the glass composition (ex.: 10 mm monolithic, 8.8.4 laminated, 8.8.2-12-10 insulating) / the length and diameter of the threaded axle if not standard dimensions (M14, 65 mm) / the reference of the spider to be used as support, or the thickness of an existing support for the delivery of the spacer.

Mechanical performance

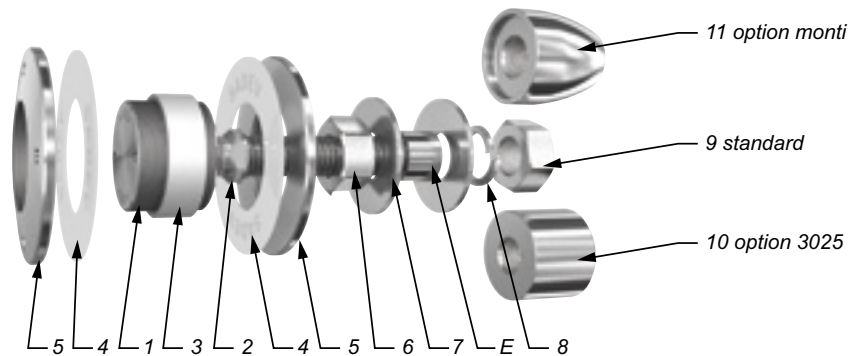


	BENDING CAPACITY			PULL OUT CAPACITY
	D	SLS*	ULS*	ULS*
M 14	45mm	344 daN (773 lb)	577 daN (1297 lb)	2000 daN (4496 lb)
	60mm	153 daN (343 lb)	364 daN (818 lb)	
M16	45mm	504 daN (1133 lb)	827 daN (1859 lb)	
	60mm	253 daN (568 lb)	525 daN (1180 lb)	



*SLS - Serviceability Limit State: load at 1mm deformation
 *ULS = Ultimate Limit State: load at the elastic limit (Rp0.1).
 Values are given without factor of safety.
 Tests available online: www.sadev.com

Components

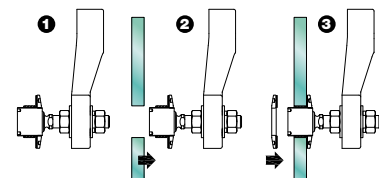


MARK	QUANTITY	DESIGNATION	MATERIAL
1	1	Swivel body	X2 Cr Ni Mo 17.12.2 as per EN 10088-3
2	1	Threaded Axle	X4 Cr Ni Mo 16.5.1 as per EN 10088-3
3	1	Glass hole grommet	AW-1050A as per EN 573-3/Al 99.5%
4	2	Contact washer	White polyacetyl/white polyethylene
5	2	Glass nut Ø60	X2 Cr Ni Mo 17.12.2 as per EN 10088-3
6	1	Nut DIN 934	A4
7	2	Washer	A4
8	1	Lock washer DIN127	A4
9	1	Nut DIN 934	A4
10	1	3025 Cap nut - Option	X2 Cr Ni Mo 17.12.2 as per EN 10088-3
11	1	Monti cap nut - Option	X2 Cr Ni Mo 17.12.2 as per EN 10088-3

Suggested mounting instruction

A – Classic mounting

Insert parts N° 1/2, 5, 4 and 3 into the glass hole. Mount the second contact washer N° 4 and nut N° 5 and tighten to 20Nm (15 ft-lb) for monolithic glass and 10Nm (7.5 ft-lb) for laminated glass using SADEV tools ref. 097581160 and ref. CLE-DYN-072031. Thread on nut N° 6 and apply washer N° 7. Insert the threaded axle into the support with spacer E (available on request), see technical page. Adjust the depth. Mount the second washer N° 7, lock washer N° 8, and nut N° 9. Tighten to 60Nm (45 ft-lb) using a 22 mm wrench.



B – Blind mounting : installation from the outside (no access to the structure)

Mount nut N° 6 and washer N° 7 onto assembly N° 1/2. Insert the threaded axle into the support with spacer E (available on request), see technical page. Adjust the depth. Mount the second washer N° 7, lock washer N° 8, and nut N° 9. Tighten to 60Nm (45 ft-lb) using a 22 mm wrench. Slide contact washer N° 4 and grommet N° 3 onto swivel body N° 1. Set the glass onto the swivel body, be careful to not contact unprotected glass edges with bare metal parts. Mount the second contact washer N° 4 and nut N° 5 and tighten to 20Nm (15 ft-lb) for monolithic glass and 10Nm (7.5 ft-lb) for laminated glass using SADEV tools ref. 097581160 and ref. CLE-DYN-072031.

SADEV recommends using thread locking compound whenever possible.

R 1008

Designation : swivel fitting, countersunk head, for installation from the outside

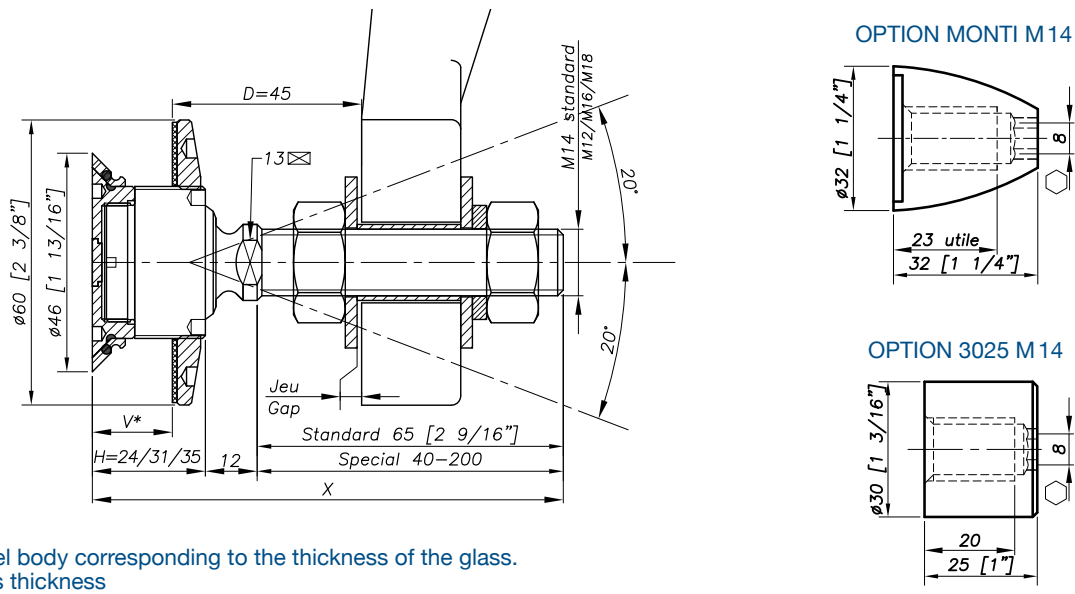


Patent No : 9806556
 Technical assessment available online : www.sadev.com
 Sealing strip between glazing available p.8.26

REFERENCE TO ORDER			
GLASS THICKNESS	Ø AXIS	LENGTH AXIS (mm)	ARTICLE CODE
$8 \leq V \leq 15$	M14	65	R1008-0815-1465*
$15 < V \leq 22$	M14	65	R1008-1522-1465
$22 < V \leq 26$	M14	65	R1008-2226-1465
SPECIAL	SPECIAL	SPECIAL	R1008-V-SP

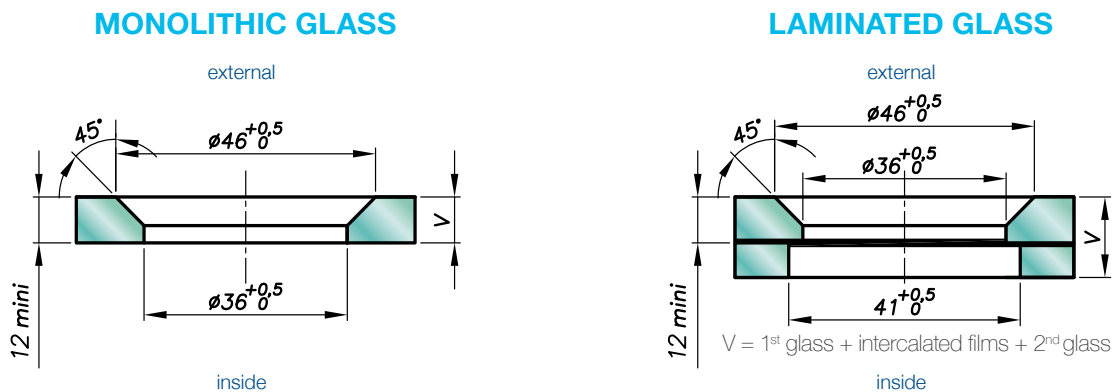
* R1008-0815-1465 : Model - Glass thickness - Type axis and length.
 Seismic swivel fitting optional

Dimensions



H = Swivel body corresponding to the thickness of the glass.
 V* = glass thickness

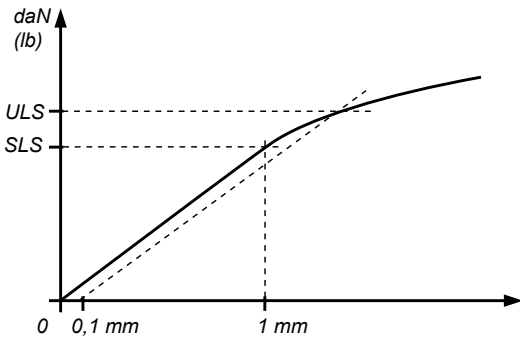
Glass drilling



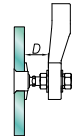
Available for glass thicknesses from 8 to 31.52 mm, for other thicknesses please consult us.

It is important to provide the following information with each request: the glass composition (ex.: 10 mm monolithic, 8.8.4 laminated, 8.8.2-12-10 insulating) / the length and diameter of the threaded axle if not standard dimensions (M14, 65 mm) / the reference of the spider to be used as support, or the thickness of an existing support for the delivery of the spacer.

Mechanical performance

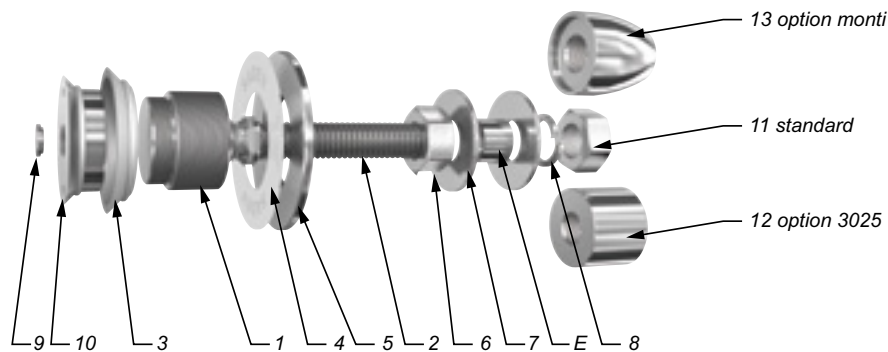


	BENDING CAPACITY			PULL OUT CAPACITY
	D	SLS*	ULS*	ULS*
M 14	45mm	344 daN (773 lb)	577 daN (1297 lb)	2000 daN (4496 lb)
	60mm	153 daN (343 lb)	364 daN (818 lb)	
M16	45mm	504 daN (1133 lb)	827 daN (1859 lb)	
	60mm	253 daN (568 lb)	525 daN (1180 lb)	



*SLS - Serviceability Limit State: load at 1mm deformation
 *ULS = Ultimate Limit State: load at the elastic limit (Rp0.1).
 Values are given without factor of safety.
 Tests available online: www.sadev.com

Components



MARK	QUANTITY	DESIGNATION	MATERIAL
1	1	Swivel body	X2 Cr Ni Mo 17.12.2 as per EN 10088-3
2	1	Threaded Axle	X4 Cr Ni Mo 16.5.1 as per EN 10088-3
3	1	Glass hole grommet	AW-1050A as per EN 573-3/Al 99.5%
4	1	Contact washer	White polyacetyl/white polyethylene
5	1	Glass nut Ø60	X2 Cr Ni Mo 17.12.2 as per EN 10088-3
6	1	Nut DIN 934	A4
7	2	Washer	A4
8	1	Lock washer DIN127	A4
9	1	Cover cap	X5 Cr Ni Mo 17.12.2 as per EN 10088-3
10	1	Countersunk bush	X5 Cr Ni Mo 17.12.2 as per EN 10088-3
		Nut DIN 934	A4
12	1	3025 Cap nut - Option	X2 Cr Ni Mo 17.12.2 as per EN 10088-3
13	1	Monti cap nut - Option	X2 Cr Ni Mo 17.12.2 as per EN 10088-3

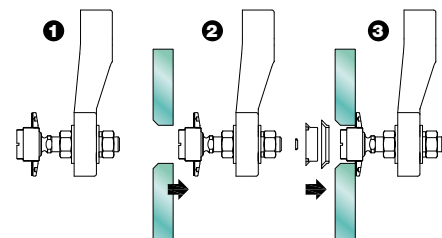
Suggested mounting instruction

Mount nut N°6 and washer N°7 onto parts N° 1/2.

Insert the threaded axle into the support with spacer E (available on request), see technical page. Adjust the depth. Mount washer N°7, lock washer N°8 and nut N°11. Tighten to 60Nm (45 ft-lb) using a 22 mm wrench. Apply contact washer N°4 and glass nut N°5 onto parts N° 1/2. Adjust to desired position. Mount the glass onto the assembly.

Thread on the countersunk bush N°10 with grommet N°3 onto parts N° 1/2.

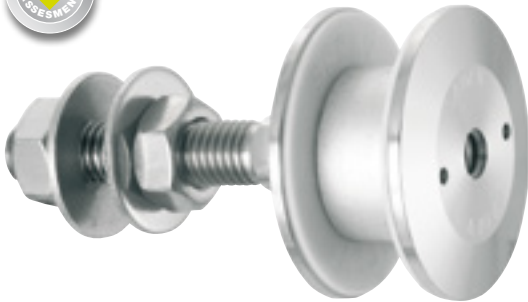
Tighten to 20Nm (15 ft-lb) for monolithic glass and 10Nm (7.5 ft-lb) for laminated glass using SADEV catalog ref. 097581160 and ref. CLE-DYN-072031. The swivel fitting is maintained with a flat screw driver while fixing part N°10. Glue in the cover cap N°9 into the countersunk bush N°10 using silicone.



SADEV recommends using thread locking compound whenever possible.

R 1038

Designation : swivel fitting, cylindrical head for installation from the outside

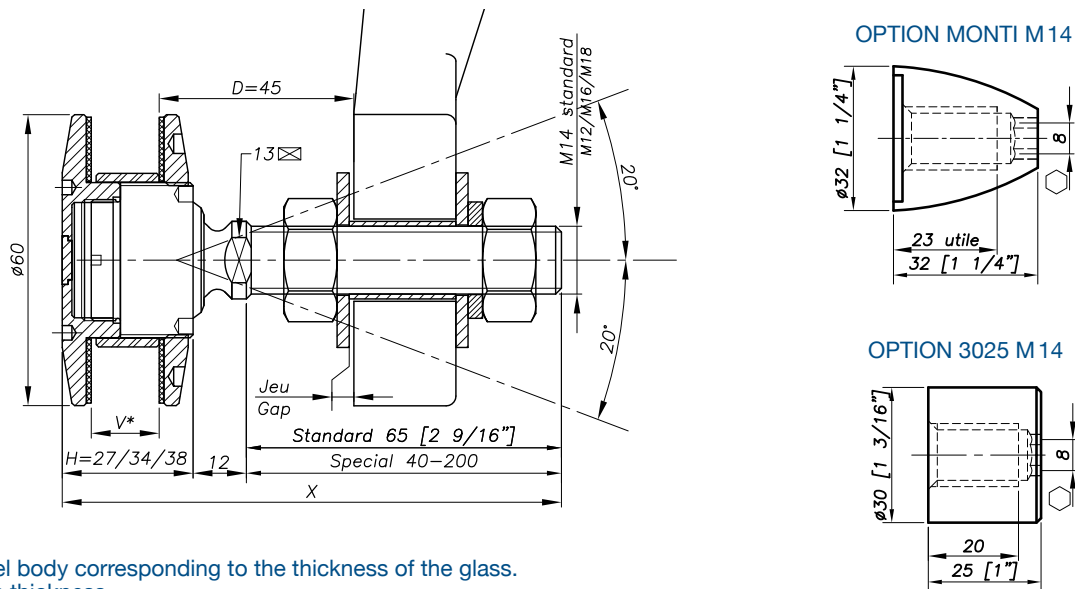


REFERENCE TO ORDER			
GLASS THICKNESS	Ø AXIS	LENGTH AXIS (mm)	ARTICLE CODE
$8 \leq V \leq 15$	M14	65	R1038-0815-1465*
$15 < V \leq 22$	M14	65	R1038-1522-1465
$22 < V \leq 26$	M14	65	R1038-2226-1465
SPECIAL	SPECIAL	SPECIAL	R1038-V-SP

Patent No : 9806556
 Technical assessment available online : www.sadev.com
 Sealing strip between glazing available p.8.26

* R1038-0815-1465 : Model - Glass thickness - Type axis and length.

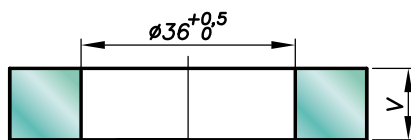
Dimensions



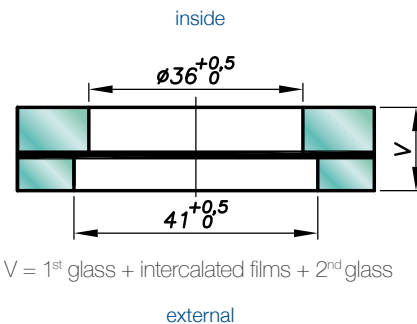
H = Swivel body corresponding to the thickness of the glass.
 V* = glass thickness

Glass drilling

MONOLITHIC GLASS



LAMINATED GLASS

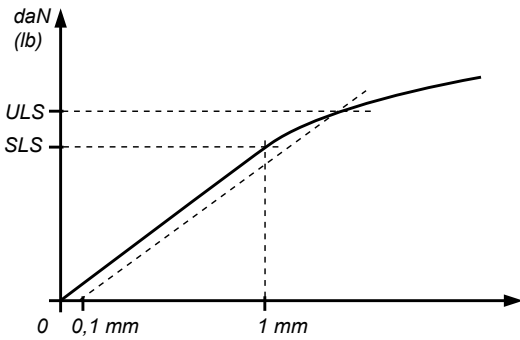


V = 1st glass + intercalated films + 2nd glass

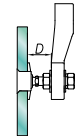
Available for glass thicknesses from 8 to 31.52 mm, for other thicknesses please consult us.

It is important to provide the following information with each request: the glass composition (ex.: 10 mm monolithic, 8.8.4 laminated, 8.8.2-12-10 insulating) / the length and diameter of the threaded axle if not standard dimensions (M14, 65 mm) / the reference of the spider to be used as support, or the thickness of an existing support for the delivery of the spacer.

Mechanical performance

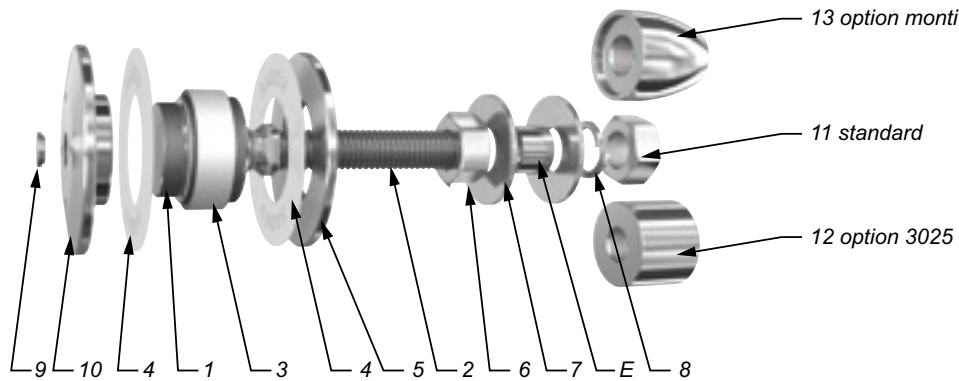


	BENDING CAPACITY			PULL OUT CAPACITY
	D	SLS*	ULS*	ULS*
M 14	45mm	344 daN (773 lb)	577 daN (1297 lb)	2000 daN (4496 lb)
	60mm	153 daN (343 lb)	364 daN (818 lb)	
M16	45mm	504 daN (1133 lb)	827 daN (1859 lb)	
	60mm	253 daN (568 lb)	525 daN (1180 lb)	



*SLS - Serviceability Limit State: load at 1mm deformation
 *ULS = Ultimate Limit State: load at the elastic limit (Rp0.1).
 Values are given without factor of safety.
 Tests available online: www.sadev.com

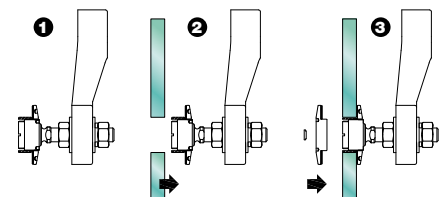
Components



MARK	QUANTITY	DESIGNATION	MATERIAL
1	1	Swivel body	X2 Cr Ni Mo 17.12.2 as per EN 10088-3
2	1	Threaded Axle	X4 Cr Ni Mo 16.5.1 as per EN 10088-3
3	1	Glass hole grommet	AW-1050A as per EN 573-3/Al 99.5%
4	2	Contact washer	White polyacetyl / white polyethylene
5	1	Glass nut Ø60	X2 Cr Ni Mo 17.12.2 as per EN 10088-3
6	1	Nut DIN 934	A4
7	2	Washer	A4
8	1	Lock washer DIN127	A4
9	1	Cover cap	X2 Cr Ni Mo 17.12.2 as per EN 10088-3
10	1	Countersunk bush	X2 Cr Ni Mo 17.12.2 as per EN 10088-3
11	1	Nut DIN 934	A4
12	1	3025 Cap nut - Option	X2 Cr Ni Mo 17.12.2 as per EN 10088-3
13	1	Monti cap nut - Option	X2 Cr Ni Mo 17.12.2 as per EN 10088-3

Suggested mounting instruction

Mount nut N°6 and washer N°7 onto parts N°1/2.
 Insert the threaded axle into the support with spacer E (available on request), see technical page.
 Adjust the depth. Mount washer N°7, lock washer N°8, and nut N°11 and tighten to 60Nm (45 ft-lb) using a 22 mm wrench. Apply contact washer N°4 and glass nut N°5.
 Adjust to the desired location. Mount the glass onto the assembly.
 Mount parts N°10 and 3 onto parts N°1/2. Tighten to 20Nm (15 ft-lb) for monolithic glass and 10Nm (7.5 ft-lb) for laminated glass using SADEV ref. 097581160 and ref. CLE-DYN-072031. Insert cover cap N°9 into the countersunk bush N°10.



SADEV recommends using thread locking compound whenever possible.

R 1001 A

Designation : swivel fitting, countersunk head - insulated glass unit



REFERENCE TO ORDER			
GLASS THICKNESS	Ø AXIS	LENGTH AXIS (mm)	ARTICLE CODE
Bespoke glass thickness	M14	65	R1001A-V-1465*
SPECIAL	SPECIAL	SPECIAL	R1001A-V-SP

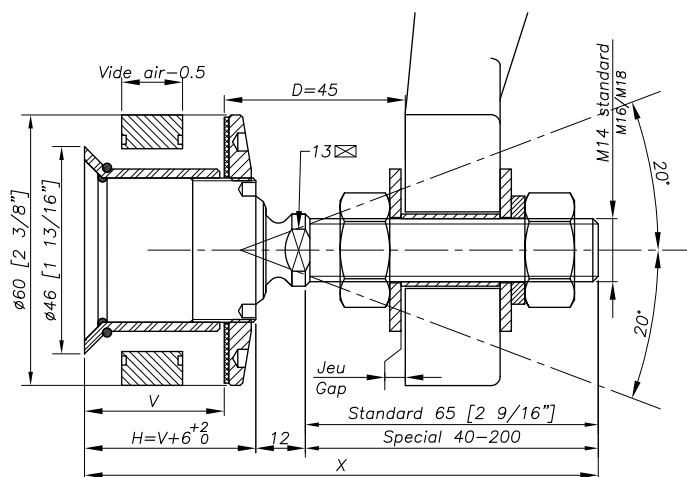
* R1001A-V-1465 : Model - Glass thickness - Type axis and length.

Patent No : 9806556

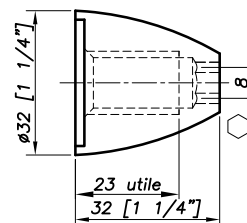
Technical assessment available online : www.sadev.com

Sealing strip between glazing available p.8.26

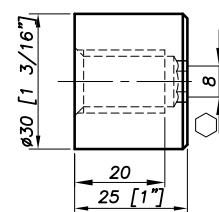
Dimensions



OPTION MONTI M 14



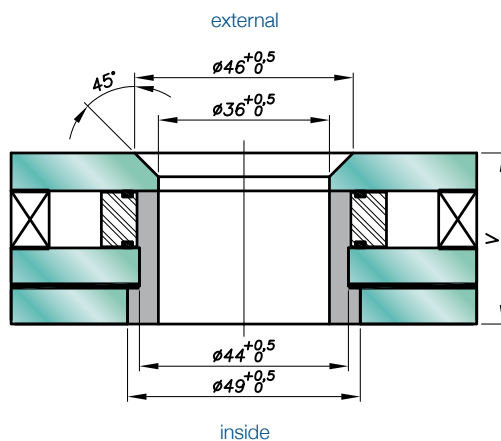
OPTION 3025 M 14



H = Swivel body corresponding to the thickness of the glass.

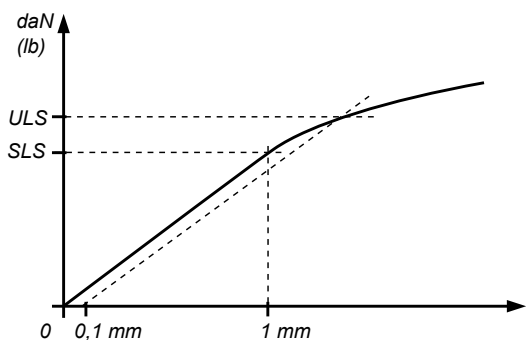
V* = glass thickness

Glass drilling

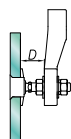


It is important to provide the following information with each request: the glass composition (ex.: 10 mm monolithic, 8.8.4 laminated, 8.8.2-12-10 insulating) / the length and diameter of the threaded axle if not standard dimensions (M14, 65 mm) / the reference of the spider to be used as support, or the thickness of an existing support for the delivery of the spacer.

Mechanical performance

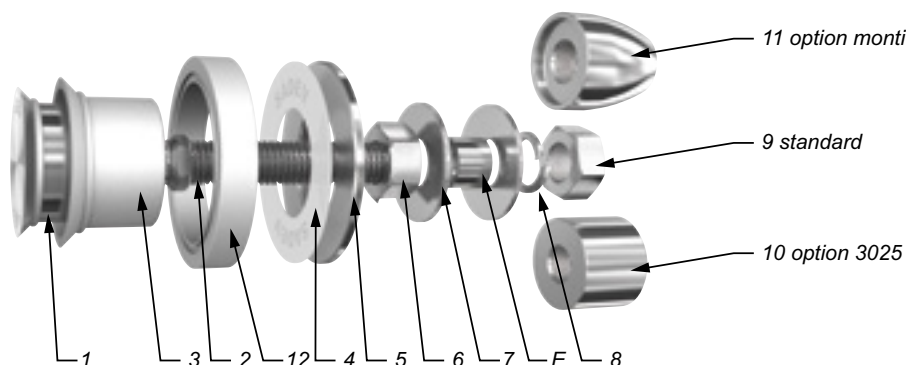


	BENDING CAPACITY			PULL OUT CAPACITY
	D	SLS*	ULS*	ULS*
M 14	45mm	344 daN (773 lb)	577 daN (1297 lb)	2000 daN (4496 lb)
	60mm	153 daN (343 lb)	364 daN (818 lb)	
M16	45mm	504 daN (1133 lb)	827 daN (1859 lb)	
	60mm	253 daN (568 lb)	525 daN (1180 lb)	



*SLS - Serviceability Limit State: load at 1mm deformation
 *ULS = Ultimate Limit State: load at the elastic limit (Rp0.1).
 Values are given without factor of safety.
 Tests available online: www.sadev.com

Components



MARK	QUANTITY	DESIGNATION	MATERIAL
1	1	Swivel body	X2 Cr Ni Mo 17.12.2 as per EN 10088-3
2	1	Threaded Axle	X4 Cr Ni Mo 16.5.1 as per EN 10088-3
3	1	Glass hole grommet	AW-1050A as per EN 573-3/Al 99.5%
4	1	Contact washer	White polyacetyl/white polyethylene
5	1	Glass nut Ø60	X2 Cr Ni Mo 17.12.2 as per EN 10088-3
6	1	Nut DIN 934	A4
7	2	Washer	A4
8	1	Lock washer DIN127	A4
9	1	Nut DIN 934	A4
10	1	3025 Cap nut - Option	X2 Cr Ni Mo 17.12.2 as per EN 10088-3
11	1	Monti cap nut - Option	X2 Cr Ni Mo 17.12.2 as per EN 10088-3
12	1	Spacing ring	AlCu4MgSi/2017A (AU4G) as per EN 573-3

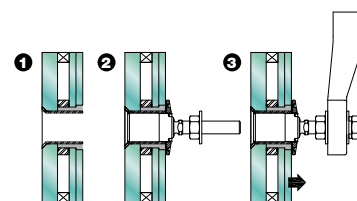
Suggested mounting instruction

1 – In factory : assembly of glass

Suggested method only, not considered to replace the recommendations of the glass manufacturer. Mount spacing ring N° 12 between the two pieces of glass using 3 mm butyl cord applied into the grooves. Assemble the IG unit. Insert glass hole grommet N°3 and secure using a neutral cure silicone.

2 – On site

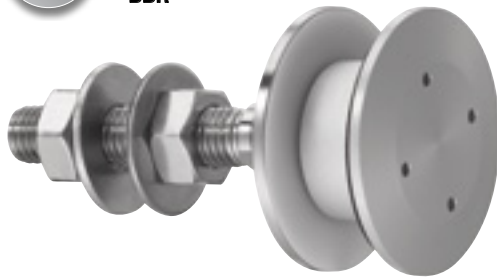
Insert parts N° 1/2 into the glass hole. Place the contact washer N° 4 over assembly N° 1/2 and thread on the glass nut N° 5. Tighten to 10Nm (7.5 ft-lb) for tempered glass using SADEV catalog ref. 097581160 and ref. CLE-DYN-072031. Thread on nut N° 6 and apply washer N° 7. Insert the threaded axle into the support with spacer E (available on request), see technical page. Adjust the depth. Mount the second washer N° 7, lock washer N° 8, and nut N° 9. Tighten to 60Nm (45 ft-lb) using a 22 mm wrench.



SADEV recommends using thread locking compound whenever possible.

R 1039

Designation : swivel fitting, cylindrical head – insulated glass unit.
Fixed on one layer of glass only

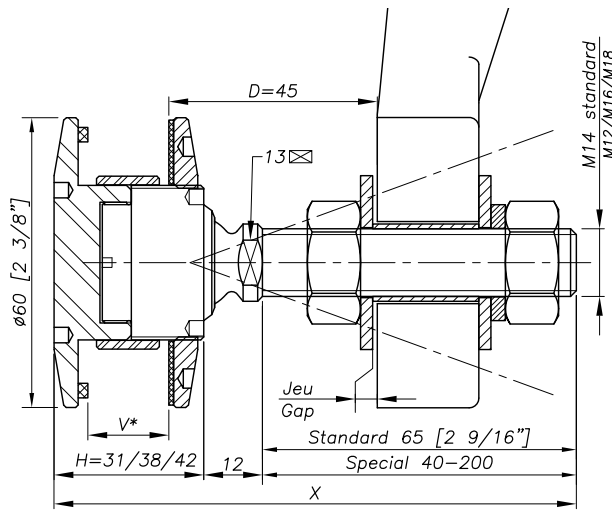


REFERENCE TO ORDER			
GLASS THICKNESS	Ø AXIS	LENGTH AXIS (mm)	ARTICLE CODE
Bespoke glass thickness	M14	65	R1039-V-1465*
SPECIAL	SPECIAL	SPECIAL	R1039-V-SP

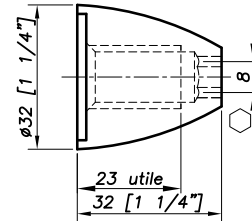
* R1039-V-1465 : Model - Glass thickness - Type axis and length.
Rotule BBR en option.

Patent No : 9806556
Technical assessment available online : www.sadev.com
Sealing strip between glazing available p.8.26

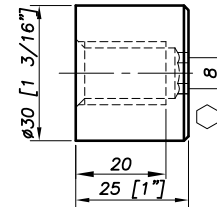
Dimensions



OPTION MONTI M 14

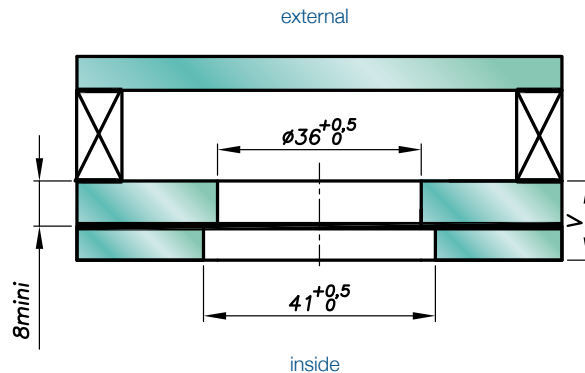


OPTION 3025 M 14



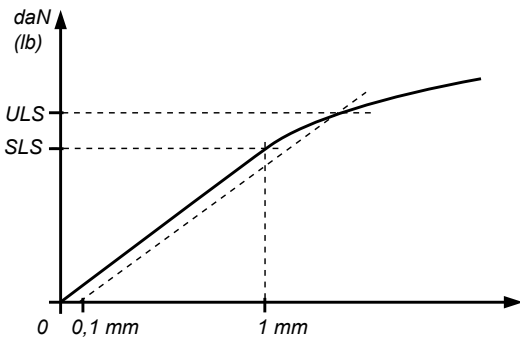
H = Swivel body corresponding to the thickness of the glass.
V* = glass thickness

Glass drilling

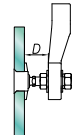


It is important to provide the following information with each request: the glass composition (ex.: 10 mm monolithic, 8.8.4 laminated, 8.8.2-12-10 insulating) / the length and diameter of the threaded axle if not standard dimensions (M14, 65 mm) / the reference of the spider to be used as support, or the thickness of an existing support for the delivery of the spacer.

Mechanical performance

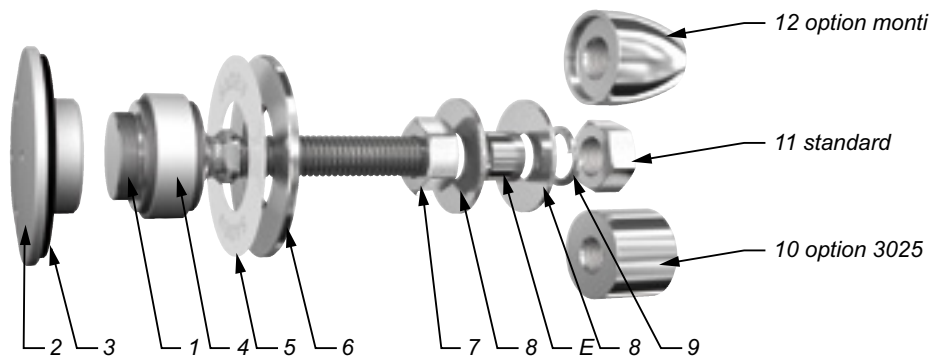


	BENDING CAPACITY			PULL OUT CAPACITY
	D	SLS*	ULS*	ULS*
M 14	45mm	344 daN (773 lb)	577 daN (1297 lb)	1 400 daN (3147 lb)
	60mm	153 daN (343 lb)	364 daN (818 lb)	
M16	45mm	504 daN (1133 lb)	827 daN (1859 lb)	
	60mm	253 daN (568 lb)	525 daN (1180 lb)	



*SLS - Serviceability Limit State: load at 1mm deformation
 *ULS = Ultimate Limit State: load at the elastic limit (Rp0.1).
 Values are given without factor of safety.
 Tests available online: www.sadev.com

Components



MARK	QUANTITY	DESIGNATION	MATERIAL
1	1	Swivel body	X2 Cr Ni Mo 17.12.2 as per EN 10088-3
2	1	Bush	AlCu4MgSi / 2017A (AU4G) as per EN 573-3
3	1	Contact washer	EPDM
4	1	Glass hole grommet	AW-1050A as per EN 573-3 / Al 99.5%
5	1	Contact washer	White polyacetyl / white polyethylene
6	1	Glass nut Ø60	X2 Cr Ni Mo 17.12.2 as per EN 10088-3
7	1	Nut DIN 934	A4
8	2	Washer	A4
9	1	Washer DIN 127	A4
10	1	3025 Cap nut - Option	X2 Cr Ni Mo 17.12.2 as per EN 10088-3
11	1	Nut DIN 934	A4
12	1	Monti cap nut - Option	X2 Cr Ni Mo 17.12.2 as per EN 10088-3

Suggested mounting instruction

1 – In factory :

Mount parts N°2, 3, 4 into the glass with a Butyl sealing strip (not included).
 Assembly by isolating glazing.

2 – On site

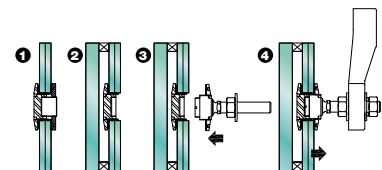
Mount the N°1 into bush N°2.

Attach contact washer N° 5 and glass nut N° 6 and tighten to 10 Nm (7.5 ft-lb)
 for laminated glass using SADEV ref. 097581160 and ref. CLE-DYN-072031.

Butyl cord applied between item 1 and the glass.

Mount nut N° 7 and washer N° 8.

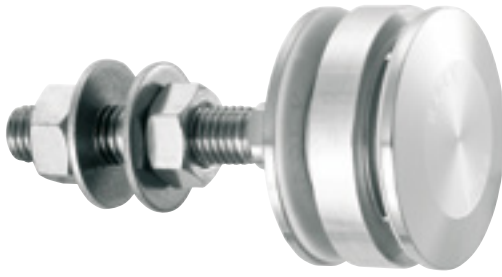
Insert the threaded axle into the support with spacer E (available on request), see technical page. Adjust the depth. Mount washer N° 8, lock washer N° 9, and tighten to 60 Nm (45 ft-lb) using a 22 mm wrench.



SADEV recommends using thread locking compound whenever possible.

R 1003 A

Designation : swivel fitting, non-fluch - pour vitrage isolant

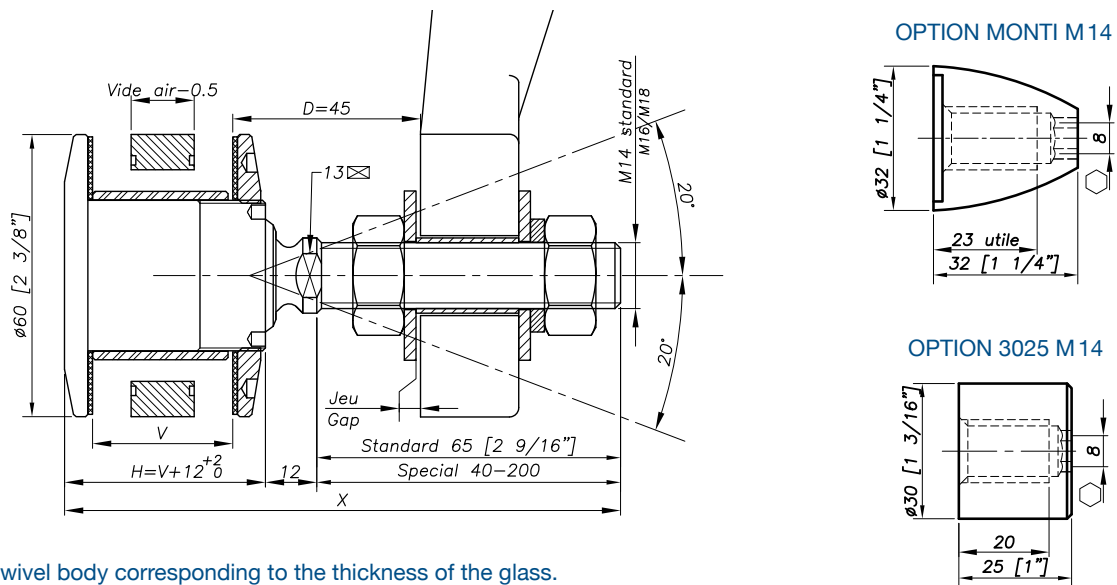


REFERENCE TO ORDER			
GLASS THICKNESS	Ø AXIS	LENGTH AXIS (mm)	ARTICLE CODE
Bespoke glass thickness	M14	65	R1003A-V-1465*
SPECIAL	SPECIAL	SPECIAL	R1003A-V-SP

* R1003A-V-1465 : Model - Glass thickness - Type axis and length.

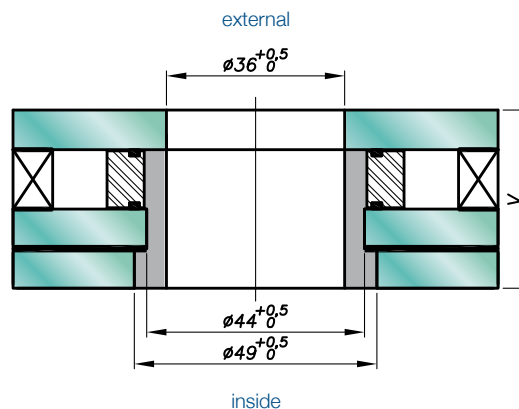
Patent No : 9806556
 Technical assessment available online : www.sadev.com
 Sealing strip between glazing available p.8.26

Dimensions



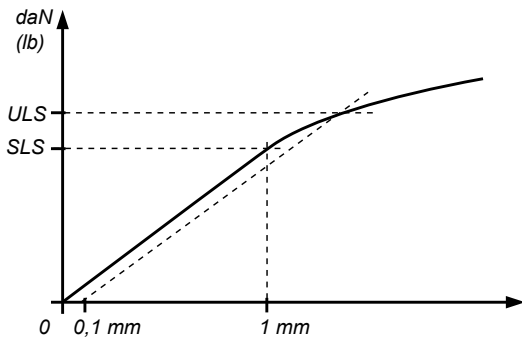
H = Swivel body corresponding to the thickness of the glass.
 V* = glass thickness

Glass drilling

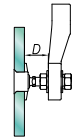


It is important to provide the following information with each request: the glass composition (ex.: 10 mm monolithic, 8.8.4 laminated, 8.8.2-12-10 insulating) / the length and diameter of the threaded axle if not standard dimensions (M14, 65 mm) / the reference of the spider to be used as support, or the thickness of an existing support for the delivery of the spacer.

Mechanical performance

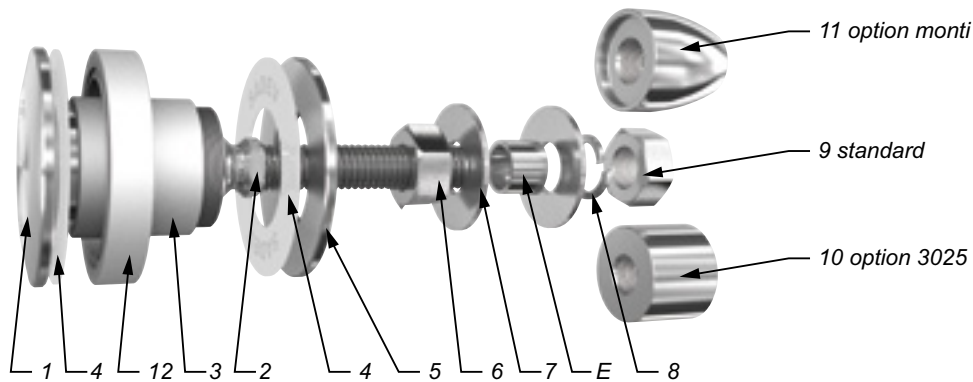


	BENDING CAPACITY			PULL OUT CAPACITY
	D	SLS*	ULS*	ULS*
M 14	45mm	344 daN (773 lb)	577 daN (1297 lb)	2000 daN (4496 lb)
	60mm	153 daN (343 lb)	364 daN (818 lb)	
M16	45mm	504 daN (1133 lb)	827 daN (1859 lb)	
	60mm	253 daN (568 lb)	525 daN (1180 lb)	



*SLS - Serviceability Limit State: load at 1mm deformation
 *ULS = Ultimate Limit State: load at the elastic limit (Rp0.1).
 Values are given without factor of safety.
 Tests available online: www.sadev.com

Components



MARK	QUANTITY	DESIGNATION	MATERIAL
1	1	Swivel body	X2 Cr Ni Mo 17.12.2 as per EN 10088-3
2	1	Threaded Axle	X4 Cr Ni Mo 16.5.1 as per EN 10088-3
3	1	Glass hole grommet	AW-1050A as per EN 573-3/Al 99.5%
4	2	Contact washer	White polyacetyl/white polyethylene
5	1	Glass nut Ø60	X2 Cr Ni Mo 17.12.2 as per EN 10088-3
6	1	Nut DIN 934	A4
7	2	Washer	A4
8	1	Lock washer DIN127	A4
9	1	Nut DIN 934	A4
10	1	3025 Cap nut - Option	X2 Cr Ni Mo 17.12.2 as per EN 10088-3
11	1	Monti cap nut - Option	X2 Cr Ni Mo 17.12.2 as per EN 10088-3
12	1	Spacing ring	AlCu4MgSi/2017A (AU4G) as per EN 573-3

Suggested mounting instruction

1 – In factory : assembly of glass

Suggested method only, not considered to replace the recommendations of the glass manufacturer.

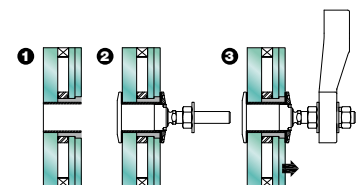
Mount spacing ring N° 12 between the two pieces of glass using 3mm butyl cord applied in the grooves. Assemble the insulated glass unit. Insert glass hole grommet N° 3 and secure using a neutral cure silicone.

2 – On site

Insert parts N° 1/2 and 4 into the glass hole.

Place the second contact washer N° 4 over assembly N° 1/2 and thread on glass nut N° 5. Tighten to 10Nm (7.5 ft-lb) for tempered glass using SADEV catalog ref. 097581160 and ref. CLE-DYN-072031.

Thread on nut N° 6 and apply washer N° 7. Insert the threaded axle into the support with spacer E (available on request), see technical page. Adjust the depth. Mount the second washer N° 7, lock washer N° 8, and nut N° 9. Tighten to 60Nm (45 ft-lb) using a 22 mm wrench.



SADEV recommends using thread locking compound whenever possible.

R 1019

Designation : swivel fitting, countersunk head.
The head is laminated between layers of glass

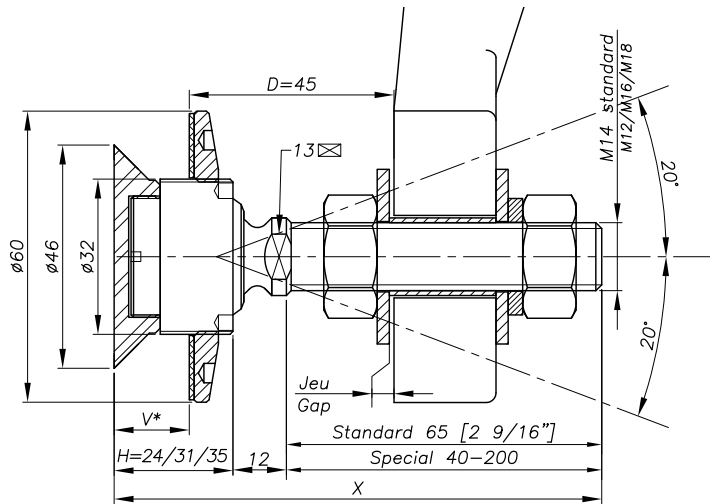


REFERENCE TO ORDER			
GLASS THICKNESS	Ø AXIS	LENGTH AXIS (mm)	ARTICLE CODE
$8 \leq V \leq 15$	M14	65	R1019-0815-1465*
$15 < V \leq 22$	M14	65	R1019-1522-1465
$22 < V \leq 26$	M14	65	R1019-2226-1465
SPECIAL	SPECIAL	SPECIAL	R1019-V-SP

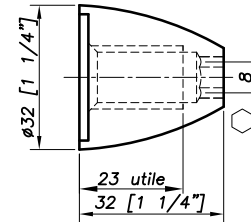
Patent No : 9806556
Technical assessment available online : www.sadev.com
Sealing strip between glazing available p.8.26

* R1019-0815-1465 : Model - Glass thickness - Type axis and length.

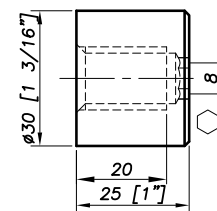
Dimensions



OPTION MONTI M 14

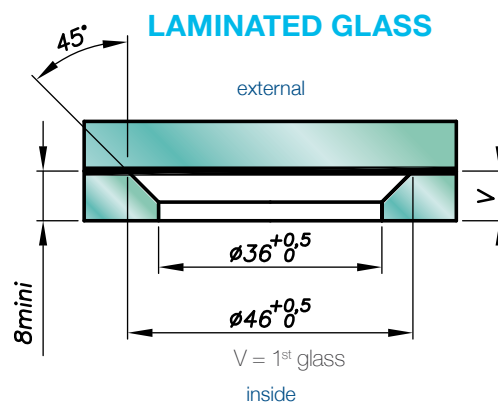


OPTION 3025 M 14



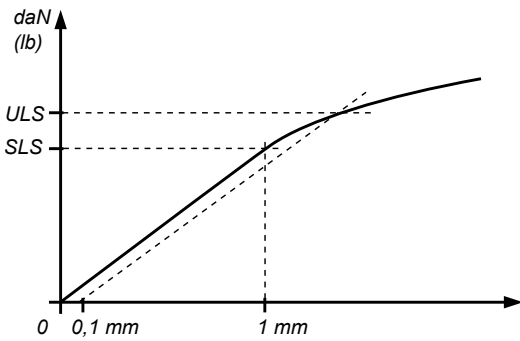
H = Swivel body corresponding to the thickness of the glass.
 V^* = glass thickness

Glass drilling

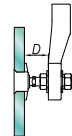


It is important to provide the following information with each request: the glass composition (ex.: 10 mm monolithic, 8.8.4 laminated, 8.8.2-12-10 insulating) / the length and diameter of the threaded axle if not standard dimensions (M14, 65 mm) / the reference of the spider to be used as support, or the thickness of an existing support for the delivery of the spacer.

Mechanical performance

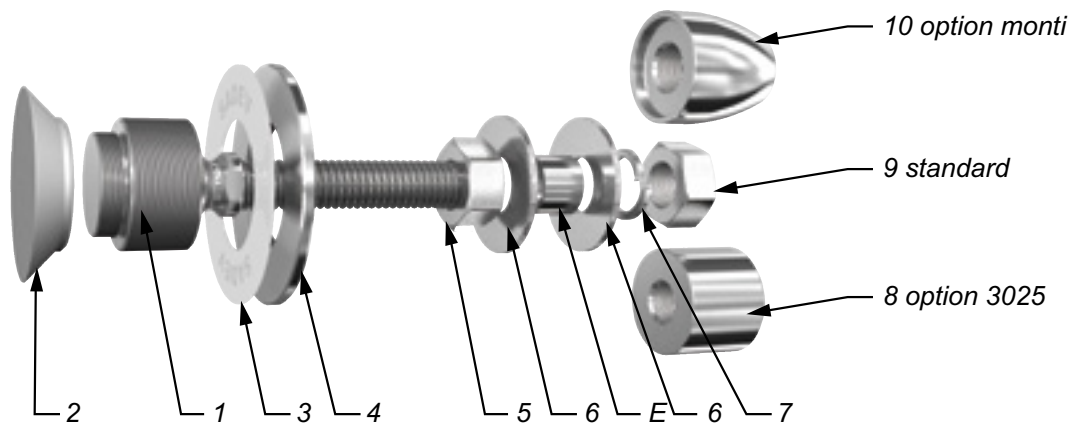


	BENDING CAPACITY			PULL OUT CAPACITY
	D	SLS*	ULS*	ULS*
M 14	45mm	344 daN (773 lb)	577 daN (1297 lb)	1 400 daN (3147 lb)
	60mm	153 daN (343 lb)	364 daN (818 lb)	
M16	45mm	504 daN (1133 lb)	827 daN (1859 lb)	
	60mm	253 daN (568 lb)	525 daN (1180 lb)	



*SLS - Serviceability Limit State: load at 1mm deformation
 *ULS = Ultimate Limit State: load at the elastic limit (Rp0.1).
 Values are given without factor of safety.
 Tests available online: www.sadev.com

Components



MARK	QUANTITY	DESIGNATION	MATERIAL
1	1	Swivel body	X2 Cr Ni Mo 17.12.2 as per EN 10088-3
2	1	Countersunk bush	AW-6060 T5 as per EN 573-3 / Al Mg Si0.5
3	1	Contact washer	White polyacetyl / white polyethylene
4	1	Glass nut Ø60	X2 Cr Ni Mo 17.12.2 as per EN 10088-3
5	1	Nut DIN 934	A4
6	2	Washer	A4
7	1	Washer DIN 127	A4
8	1	3025 Cap nut - Option	X2 Cr Ni Mo 17.12.2 as per EN 10088-3
9	1	Nut DIN 934	A4
10	1	Monti cap nut - Option	X2 Cr Ni Mo 17.12.2 as per EN 10088-3

Suggested mounting instruction

1 – In factory

Mount countersunk bush N°2 into the glass.

Assemble the second layer of glass.

2 – On site

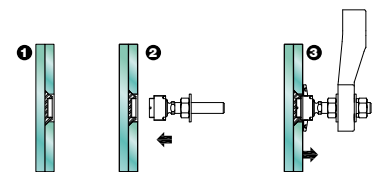
Mount the swivel body N°1 into the countersunk bush N°2 using SADEV wrench ref. 097581160.

Mount the parts N°3 and N°4 and tighten to 10 Nm for laminated glass with SADEV wrench.

Mount the Nut N°5 and washer N°6.

Insert the threaded axle into the support with spacer E (available on request), see technical page. Adjust the depth.

Mount the washer N°6 + washer DIN 127 + nut N°5 and tighten to 60 Nm with plate wrench 22mm



SADEV recommends using thread locking compound whenever possible

R 1006 TSSA

Designation: swivel fitting, Ø 60 mm,
for UV bonding to glass.



REFERENCE TO ORDER			
GLASS THICKNESS	Ø AXIS	LENGTH AXIS (mm)	ARTICLE CODE
	M14	65	R1006TSSA-1465*
	SPECIAL	SPECIAL	R1006TSSA-SP

* R1006TSSA-1465 : Model - type axis and length.

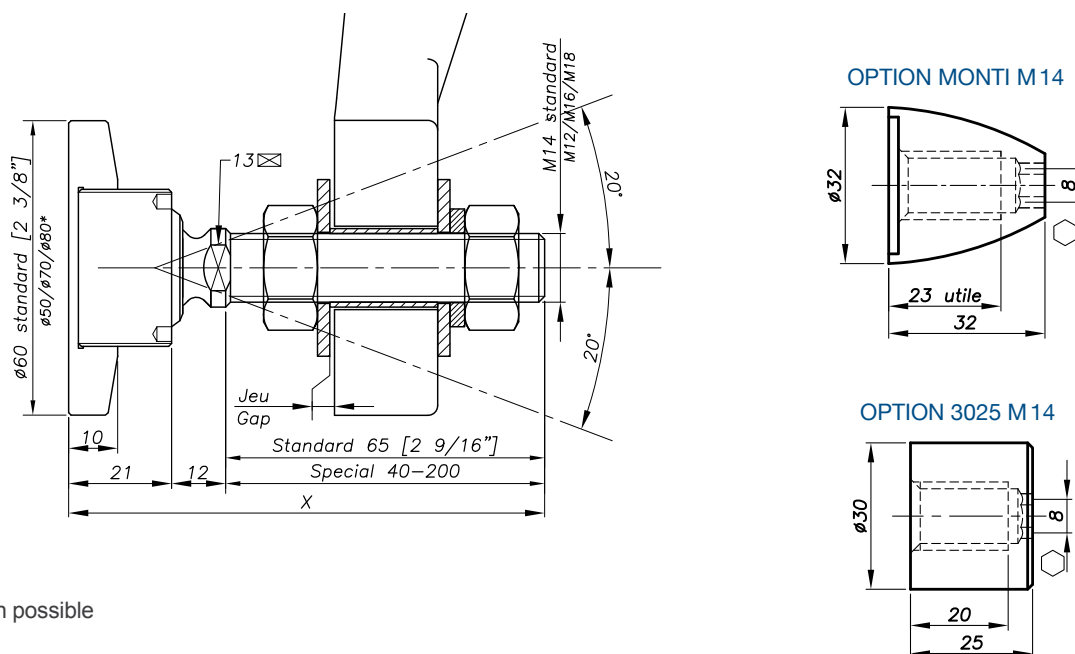
Patent N° : 9806556

Technical assessment available online : www.sadev.com

Sealing strip between glazing available p.8.26

The swivel fitting R1006 TSSA has been specially designed for bonding type Dow Corning TSSA (Transparent Structural Silicone Adhesive).
More information on www.dowcorning.com.

Dimensions



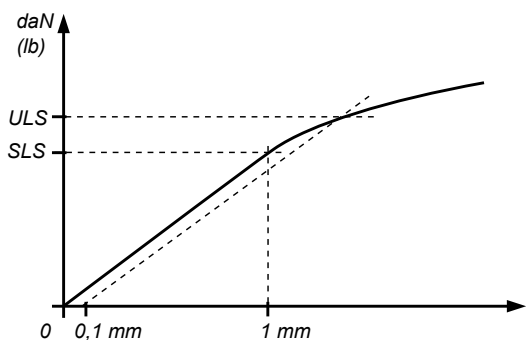
* Option possible

No glass drilling

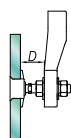
SHEAR STRESS	MATERIAL
0.593 kN at 1mm deformation	1.191 kN at 1mm deformation
6.492 kN at failure	5.949 kN at failure
778 N/mm shear rigidity	
453 kNmm Bending Moment	
1191 kN tensile stress at 1mm deformation	
5949 kN tensile stress at failure	

It is important to provide the following information with each request: the glass composition (ex.: 10 mm monolithic, 8.8.4 laminated, 8.8.2-12-10 insulating) / the length and diameter of the threaded axle if not standard dimensions (M14, 65 mm) / the reference of the spider to be used as support, or the thickness of an existing support for the delivery of the spacer.

Mechanical performance

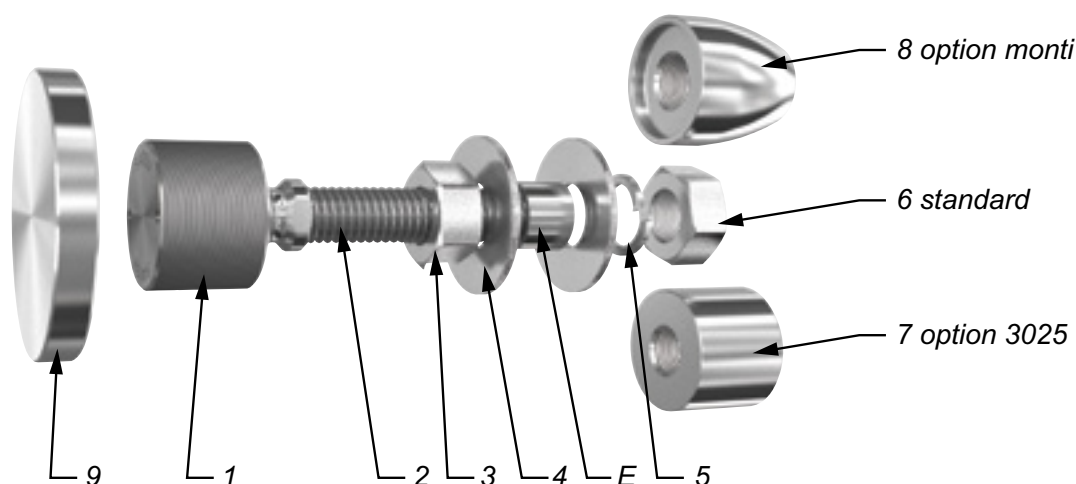


	BENDING CAPACITY			PULL OUT CAPACITY
	D	SLS*	ULS*	ULS*
M 14	45mm	344 daN (773 lb)	577 daN (1297 lb)	2000 daN (4496 lb)
	60mm	153 daN (343 lb)	364 daN (818 lb)	
M16	45mm	504 daN (1133 lb)	827 daN (1859 lb)	
	60mm	253 daN (568 lb)	525 daN (1180 lb)	



*SLS - Serviceability Limit State: load at 1mm deformation
 *ULS = Ultimate Limit State: load at the elastic limit (Rp0.1).
 Values are given without factor of safety.
 Tests available online: www.sadev.com

Components



MARK	QUANTITY	DESIGNATION	MATERIAL
1	1	Swivel body	X2 Cr Ni Mo 17.12.2 as per EN 10088-3
2	1	Threaded Axle	X4 Cr Ni Mo 16.5.1 as per EN 10088-3
3	1	Nut DIN 934	A4
4	2	Washer	A4
5	1	Lock washer DIN127	A4
6	1	Nut DIN 934	A4
7	1	3025 Cap nut - Option	X2 Cr Ni Mo 17.12.2 as per EN 10088-3
8	1	Monti cap nut - Option	X2 Cr Ni Mo 17.12.2 as per EN 10088-3
9	1	Adhesion disk	X2 Cr Ni Mo 17.12.2 as per EN 10088-3

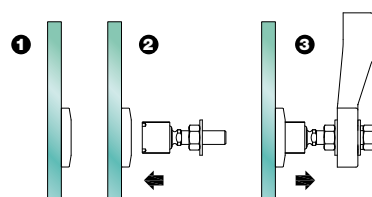
Suggested mounting instruction

Attach adhesion disk N°9 onto the glass in accordance with technical specifications of UV glue manufacturer and glass fabricator (Can be adhered in the factory).

Mount parts N° 1/2 into part N°9. Thread on nut N°3 and apply washer N°4.

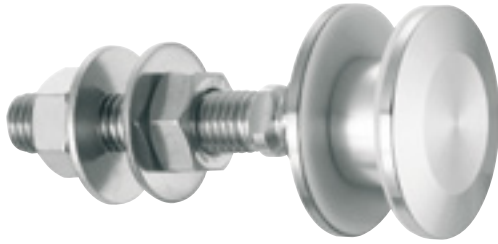
Insert the threaded axle into the support with spacer E (available on request), see technical page. Adjust the depth. Mount the second washer N°4, lock washer N°5, and nut N°6. Tighten to 60Nm (45 ft-lb) using a 22 mm wrench.

SADEV recommends using thread locking compound whenever possible.



R 1103

Designation : swivel fitting,
non-fluch countersunk head, Ø50 mm

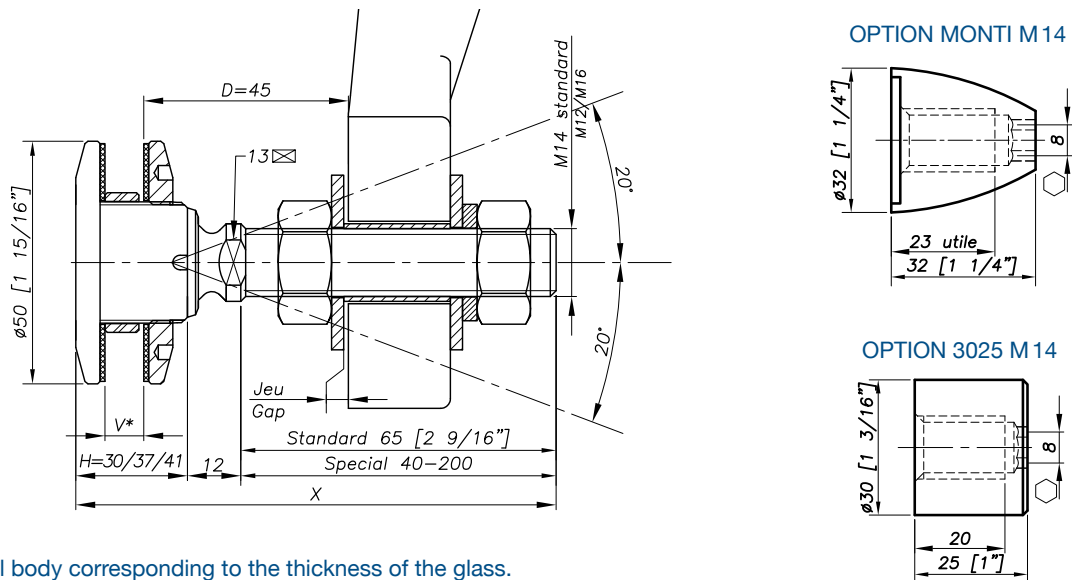


REFERENCE TO ORDER			
GLASS THICKNESS	Ø AXIS	LENGTH AXIS (mm)	ARTICLE CODE
$8 \leq V \leq 15$	M14	65	R1103-0815-1465*
$15 < V \leq 22$	M14	65	R1103-1522-1465
$22 < V \leq 26$	M14	65	R1103-2226-1465
SPECIAL	SPECIAL	SPECIAL	R1103-V-SP

Patent No : 9806556
 Technical assessment available online: www.sadev.com
 Sealing strip between glazing available p.8.26

* R1103-0815-1465 : Model - Glass thickness - Type axis and length.

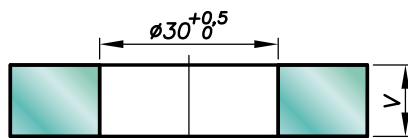
Dimensions



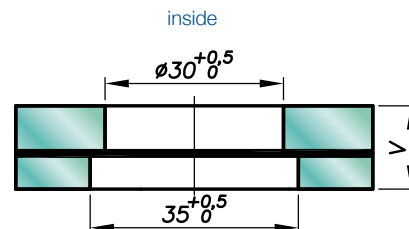
H = Swivel body corresponding to the thickness of the glass.
 V* = glass thickness

Glass drilling

MONOLITHIC GLASS



LAMINATED GLASS



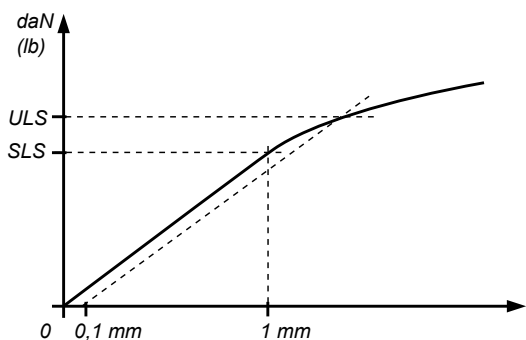
V = 1st glass + intercalated films + 2nd glass

external

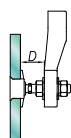
Available for glass thicknesses from 8 to 31.52 mm, for other thicknesses please consult us.

It is important to provide the following information with each request: the glass composition (ex.: 10 mm monolithic, 8.8.4 laminated, 8.8.2-12-10 insulating) / the length and diameter of the threaded axle if not standard dimensions (M14, 65 mm) / the reference of the spider to be used as support, or the thickness of an existing support for the delivery of the spacer.

Mechanical performance

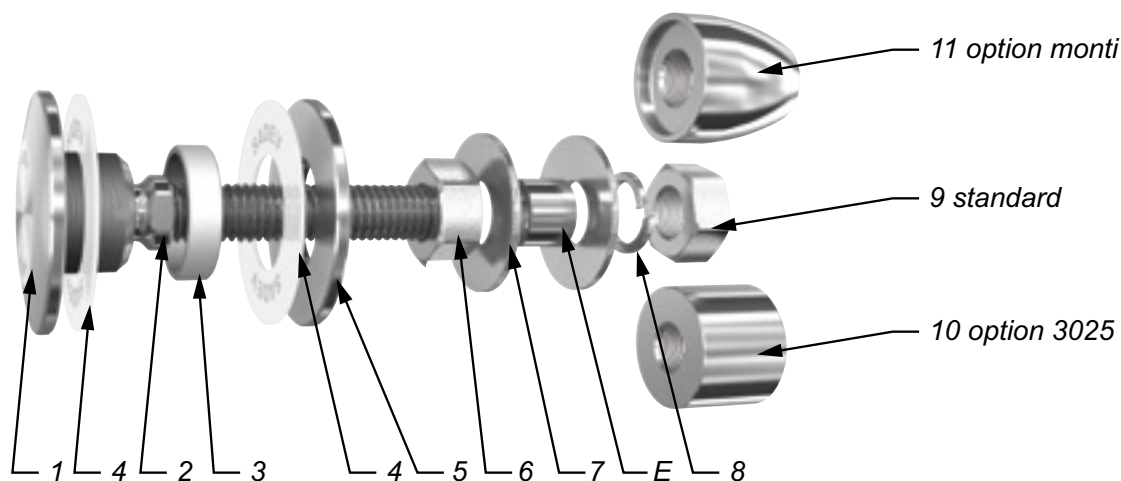


	BENDING CAPACITY			PULL OUT CAPACITY
	D	SLS*	ULS*	ULS*
M 14	45mm	344 daN (773 lb)	577 daN (1297 lb)	1 400 daN (3147 lb)
	60mm	153 daN (343 lb)	364 daN (818 lb)	
M 16	45mm	504 daN (1133 lb)	827 daN (1859 lb)	
	60mm	253 daN (568 lb)	525 daN (1180 lb)	



*SLS - Serviceability Limit State: load at 1mm deformation
 *ULS = Ultimate Limit State: load at the elastic limit (Rp0.1).
 Values are given without factor of safety.
 Tests available online: www.sadev.com

Components



MARK	QUANTITY	DESIGNATION	MATERIAL
1	1	Swivel body	X2 Cr Ni Mo 17.12.2 as per EN 10088-3
2	1	Threaded Axle	X4 Cr Ni Mo 16.5.1 as per EN 10088-3
3	1	Glass hole grommet	AW-1050A as per EN 573-3/Al 99.5%
4	2	Contact washer	White polyacetyl / white polyethylene
5	1	Glass nut Ø50	X2 Cr Ni Mo 17.12.2 as per EN 10088-3
6	1	Nut DIN 934	A4
7	2	Washer	A4
8	1	Lock washer DIN127	A4
9	1	Nut DIN 934	A4
10	1	3025 Cap nut - Option	X2 Cr Ni Mo 17.12.2 as per EN 10088-3
11	1	Monti cap nut - Option	X2 Cr Ni Mo 17.12.2 as per EN 10088-3

Suggested mounting instruction

Insert parts N° 1/2, 4, and 3 into the glass hole.

Mount the second contact washer N° 4 and glass nut N° 5 and tighten to 20Nm (15 ft-lb) for monolithic glass and 10Nm (7.5 ft-lb) for laminated glass using tools SADEV ref. 097581160.

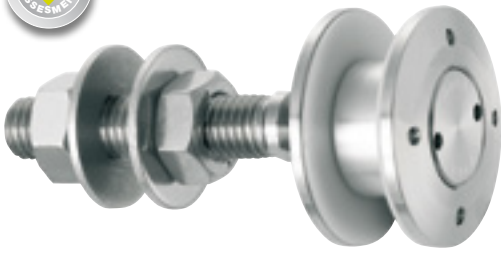
Mount nut N° 6 and washer N° 7 onto parts N° 1/2.

Insert the threaded axle into the support with spacer E (available on request), see technical page. Adjust the depth. Mount washer N° 7, lock washer N° 8, and nut N° 9 and tighten to 60Nm (45 ft-lb) using a 22 mm wrench.

SADEV recommends using thread locking compound whenever possible.

R 1106

Designation : swivel fitting, cylindrical head, Ø50 mm.
Installation from the outside possible

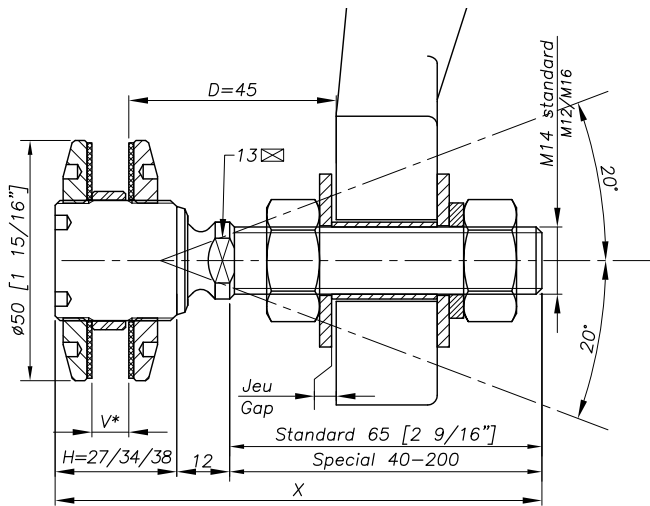


REFERENCE TO ORDER			
GLASS THICKNESS	Ø AXIS	LENGTH AXIS (mm)	ARTICLE CODE
$8 \leq V \leq 15$	M14	65	R1106-0815-1465*
$15 < V \leq 22$	M14	65	R1106-1522-1465
$22 < V \leq 26$	M14	65	R1106-2226-1465
SPECIAL	SPECIAL	SPECIAL	R1106-V-SP

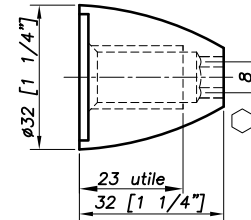
Patent No : 9806556
Technical assessment available online : www.sadev.com
Sealing strip between glazing available p.8.26

* R1106-0815-1465 : Model - Glass thickness - Type axis and length.

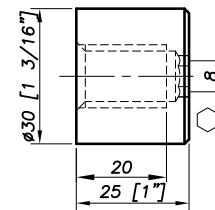
Dimensions



OPTION MONTI M 14



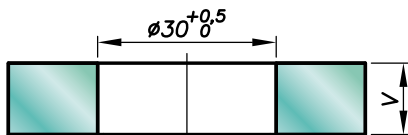
OPTION 3025 M 14



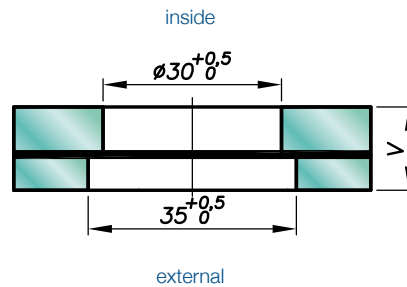
H = Swivel body corresponding to the thickness of the glass.
V* = glass thickness

Glass drilling

MONOLITHIC GLASS



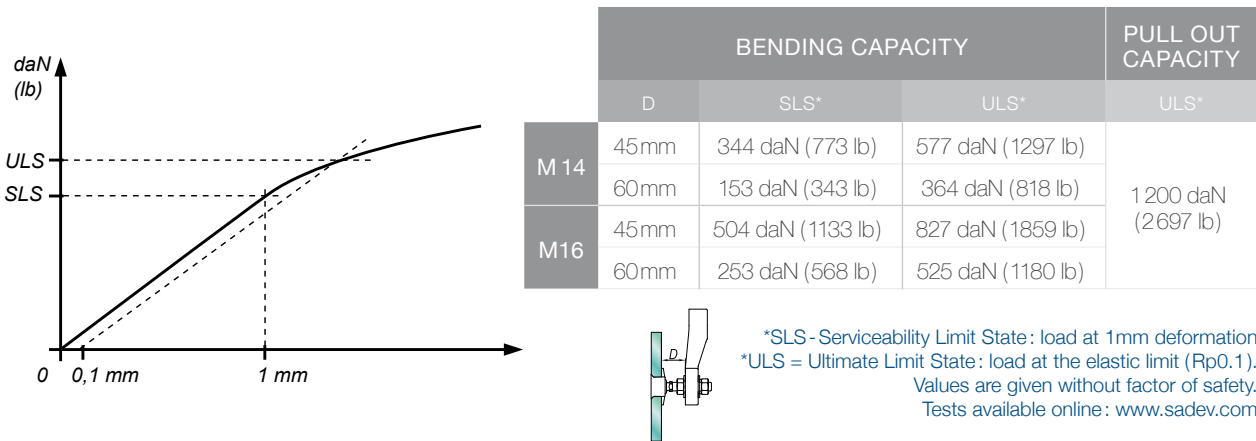
LAMINATED GLASS



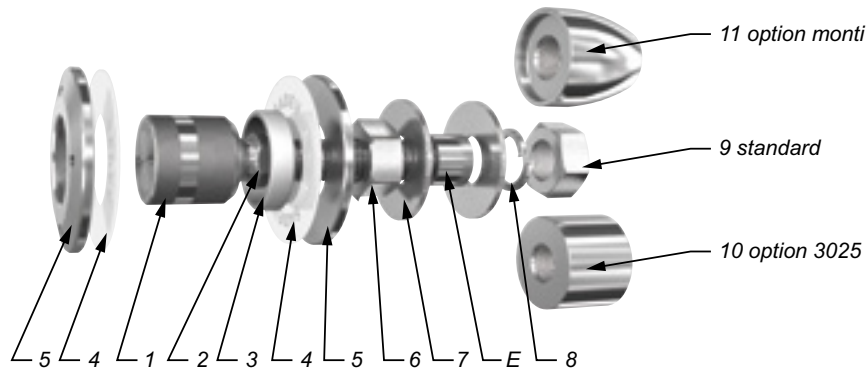
Available for glass thicknesses from 8 to 31.52 mm, for other thicknesses please consult us.

It is important to provide the following information with each request: the glass composition (ex.: 10 mm monolithic, 8.8.4 laminated, 8.8.2-12-10 insulating) / the length and diameter of the threaded axle if not standard dimensions (M14, 65 mm) / the reference of the spider to be used as support, or the thickness of an existing support for the delivery of the spacer.

Mechanical performance



Components



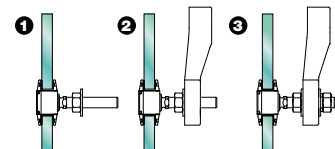
MARK	QUANTITY	DESIGNATION	MATERIAL
1	1	Swivel body	X2 Cr Ni Mo 17.12.2 as per EN 10088-3
2	1	Threaded Axle	X4 Cr Ni Mo 16.5.1 as per EN 10088-3
3	1	Glass hole grommet	AW-1050A as per EN 573-3/Al 99.5%
4	2	Contact washer	White polyacetyl/white polyethylene
5	2	Glass nut Ø50	X2 Cr Ni Mo 17.12.2 as per EN 10088-3
6	1	Nut DIN 934	A4
7	2	Washer	A4
8	1	Lock washer DIN127	A4
9	1	Nut DIN 934	A4
10	1	3025 Cap nut - Option	X2 Cr Ni Mo 17.12.2 as per EN 10088-3
11	1	Monti cap nut - Option	X2 Cr Ni Mo 17.12.2 as per EN 10088-3

Suggested mounting instruction

A – Classic mounting

Insert parts N° 1/2, 5, 4 and 3 into the glass hole. Place the second contact washer N° 4 over assembly N° 1/2 and thread on glass nut N° 5. Tighten to 10Nm (7.5 ft-lb) for tempered glass using SADEV catalog ref. 097581160. Thread on nut N° 6 and apply washer N° 7. Insert the threaded axle into the support with spacer E (available on request), see technical page.

Adjust the depth. Mount the second washer N° 7, lock washer N° 8, and nut N° 9. Tighten to 60Nm (45 ft-lb) using a 22 mm wrench.



B – Blind mounting : installation from the outside (no access to the structure)

Mount nut N° 6 and washer N° 7 onto assembly N° 1/2. Insert the threaded axle into the support with spacer E (available on request), see technical page. Adjust the depth. Mount the second washer N° 7, lock washer N° 8, and nut N° 9. Tighten to 60Nm (45 ft-lb) using a 22 mm wrench. Slide contact washer N° 4 and grommet N° 3 onto swivel body N° 1. Set the glass onto the swivel body, careful not to contact unprotected glass edges with bare metal parts. Place the second contact washer N° 4 over assembly N° 1/2 and thread on glass nut N° 5. Tighten to 10Nm (7.5 ft-lb) for tempered glass using SADEV catalog ref. 097581160.

SADEV recommends using thread locking compound whenever possible.

RC 70

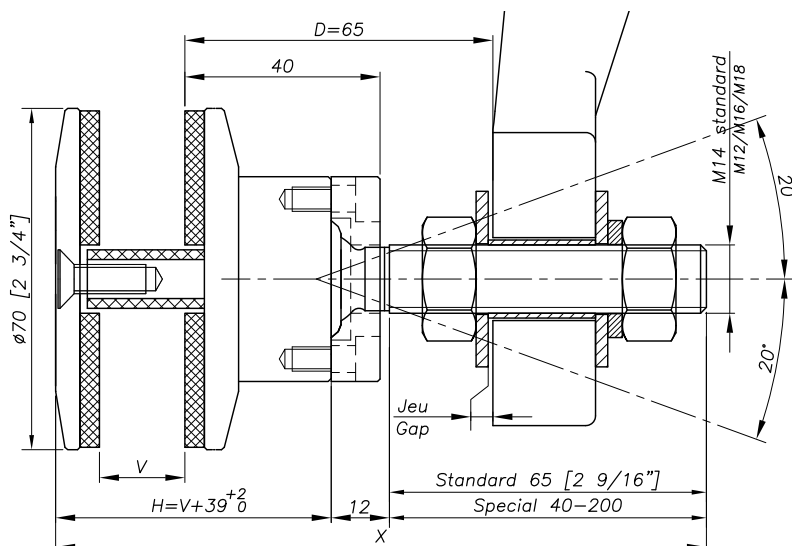
Designation : clamp swivel fitting



REFERENCE TO ORDER			
GLASS THICKNESS	Ø AXIS	LENGTH AXIS (mm)	ARTICLE CODE
$8 \leq V \leq 15$	M14	65	RC70-V1
$15 < V \leq 22$	M14	65	RC70-V2
$22 < V \leq 26$	M14	65	RC70-V3
SPECIAL	SPECIAL	SPECIAL	RC70-SP

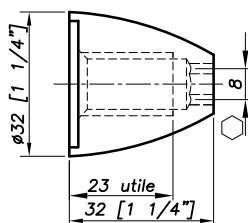
Patent No : 9806556
 Technical assessment available online : www.sadev.com
 Sealing strip between glazing available p.8.26

Dimensions

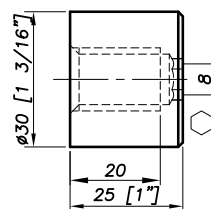


V* = glass thickness.

OPTION MONTI M 14

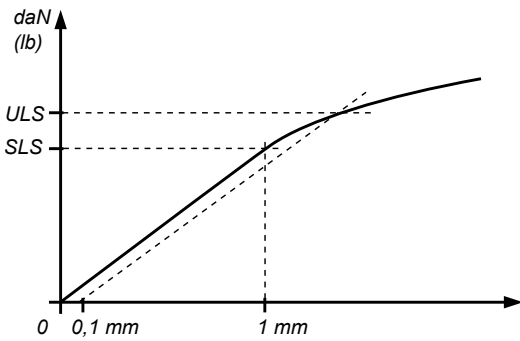


OPTION 3025 M 14

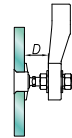


N° glass drilling

Mechanical performance

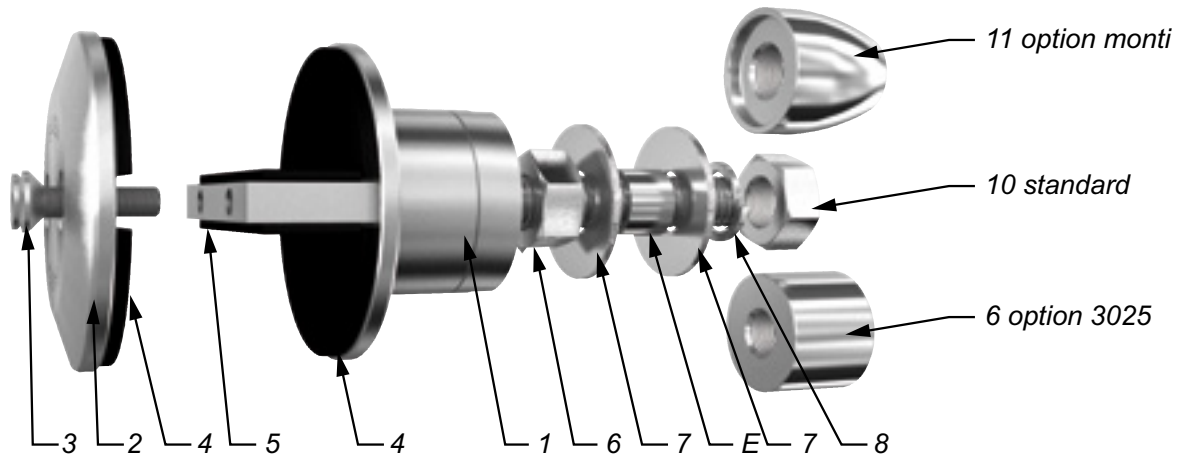


	BENDING CAPACITY			PULL OUT CAPACITY
	D	SLS*	ULS*	ULS*
M 14	45mm	344 daN (773 lb)	577 daN (1297 lb)	2000 daN (4496 lb)
	60mm	153 daN (343 lb)	364 daN (818 lb)	
M 16	45mm	504 daN (1133 lb)	827 daN (1859 lb)	
	60mm	253 daN (568 lb)	525 daN (1180 lb)	



*SLS - Serviceability Limit State: load at 1mm deformation
 *ULS = Ultimate Limit State: load at the elastic limit (Rp0.1).
 Values are given without factor of safety.
 Tests available online: www.sadev.com

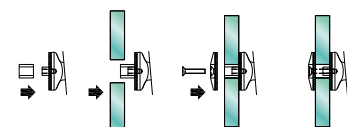
Components



MARK	QUANTITY	DESIGNATION	MATERIAL
1	1	Swivel body	X2 Cr Ni Mo 17.12.2 as per EN 10088-3
2	1	Flasque externe	X2 Cr Ni Mo 17.12.2 as per EN 10088-3
3	2	Bolt DIN 7991M6x25	A4
4	4	Demi-lune de protection	EPDM
5	2	Plat de protection	EPDM
6	1	Nut DIN 934	A4
7	2	Washer	A4
8	1	Lock washer DIN127	A4
9	1	Nut DIN 934	A4
10	1	3025 Cap nut - Option	A4
11	1	Monti cap nut - Option	A4

Suggested mounting instruction

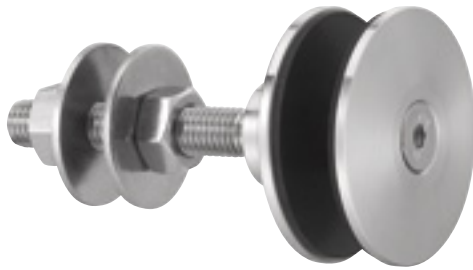
Install the nut (# 6) + 1 washer (#7) on part (#1).
 Install through the hole in the support or spider casting. Spacer E over threads to prevent fitting from fully tightening on support for differential movements between structure and glass support (supplied on request). Adjust depth in or out as needed.
 Mounting other washer (#7) and lock washer (#8) + nut (#9, 10 (standard), or 11) and torque to 60 Nm (45 ft lbs). Set glass on gravity shelf with EPDM (#5) setting block.
 Mount the external disc (#2) with EPDM (#4) washer between glass and metal using 2 screws (#3) provided. Torque screws to 20 Nm (15 ft lbs) for monolithic glass and 10 Nm (8 ft lbs) for laminated (PVB) glass using a 4mm hex wrench.



Sadev recommends using tread locker on the external clamping screws on exterior applications.

R 1006-M8

Designation : swivel fitting, cylindrical head, installation from the outside possible

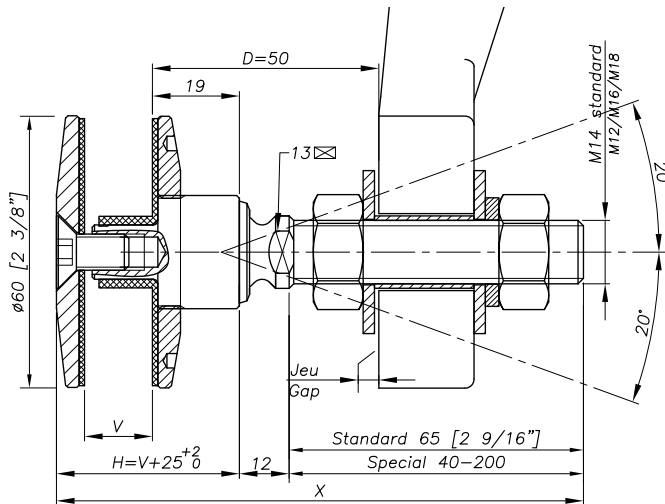


REFERENCE TO ORDER			
GLASS THICKNESS	Ø AXIS	LENGTH AXIS (mm)	ARTICLE CODE
Bespoke glass thickness	M14	65	R1006-M8-V-1465*
SPECIAL	SPECIAL	SPECIAL	R1006-M8-V-SP

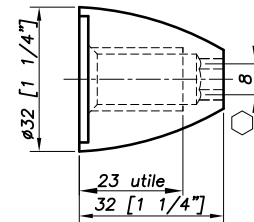
* R1006-M8-V-1465 : Model - Glass thickness - Type axis and length.

Patent No : 9806556
 Technical assessment available online : www.sadev.com
 Sealing strip between glazing available p.8.26

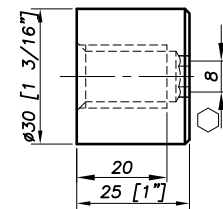
Dimensions



OPTION MONTI M 14



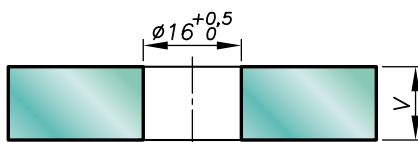
OPTION 3025 M 14



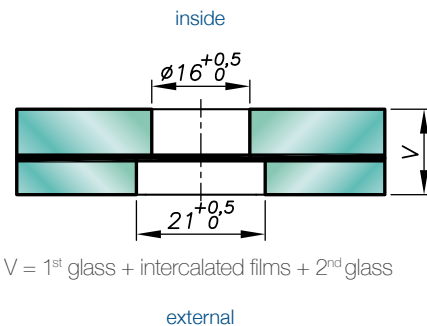
H = Swivel body corresponding to the thickness of the glass.
 V* = glass thickness

Glass drilling

MONOLITHIC GLASS



LAMINATED GLASS

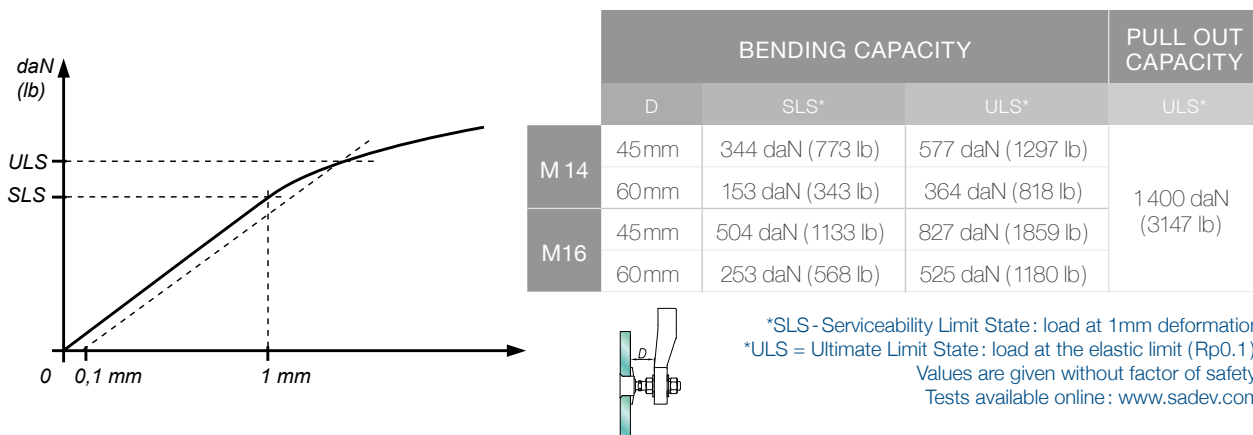


V = 1st glass + intercalated films + 2nd glass

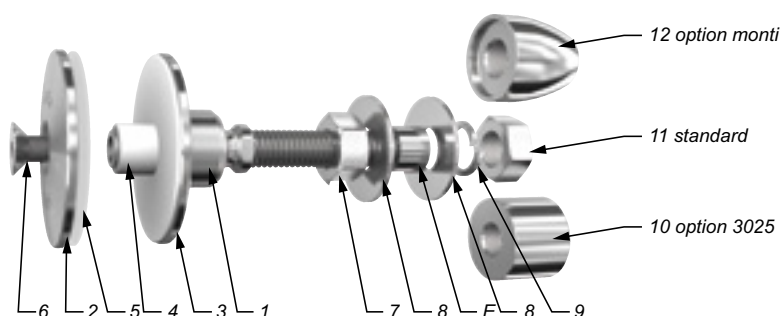
Available for glass thicknesses from 8 to 31.52 mm, for other thicknesses please consult us.

It is important to provide the following information with each request: the glass composition (ex.: 10 mm monolithic, 8.8.4 laminated, 8.8.2-12-10 insulating) / the length and diameter of the threaded axle if not standard dimensions (M14, 65 mm) / the reference of the spider to be used as support, or the thickness of an existing support for the delivery of the spacer.

Mechanical performance



Components



MARK	QUANTITY	DESIGNATION	MATERIAL
1	1	Swivel body	X2 Cr Ni Mo 17.12.2 as per EN 10088-3
2	1	External plate	X2 Cr Ni Mo 17.12.2 as per EN 10088-3
3	1	Glass nut Ø60	X2 Cr Ni Mo 17.12.2 as per EN 10088-3
4	1	Shoulder contact washer	White polyacetyl / white polyethylene
5	1	Contact washer	White polyacetyl / white polyethylene
6	1	Bolt DIN 7991 M8x20	A4
7	1	Nut DIN 934	A4
8	2	Washer	A4
9	1	Lock washer DIN 127	A4
10	1	3025 Cap nut - Option	X2 Cr Ni Mo 17.12.2 as per EN 10088-3
11	1	Nut DIN 934	A4
12	1	Monti cap nut - Option	X2 Cr Ni Mo 17.12.2 as per EN 10088-3

Suggested mounting instruction

A – Classic mounting

Insert parts N° 1, 3, 4 and 3 into the glass hole. Place the second contact washer N°5 over assembly N°2 and thread on glass nut N°6. Tighten to 20Nm for tempered glass using SADEV catalog ref. 097581160. Thread on nut N°7 and apply washer N°8. Insert the threaded axle into the support with spacer E (available on request), see technical page. Adjust the depth. Mount the second washer N°8, lock washer N°9, and nut N°7. Tighten to 60Nm (45 ft-lb) using a 22 mm wrench.

B – Blind mounting : installation from the outside (N° access to the structure)

Mount nut N°7 and washer N°8 onto assembly N°1,3,4. Insert the threaded axle into the support with spacer E (available on request), see technical page. Adjust the depth. Mount the second washer N°8, lock washer N°9, and nut N°7. Tighten to 60Nm (45 ft-lb) using a 22 mm wrench. Mount the glazing. Mount contact washer N°8 + plate N°2 with screw M8 N°6 and tighten to 20Nm for monolithic glass and 10Nm for laminated glass using SADEV catalog ref. 097581160.

SADEV recommends using thread locking, except specific mounting constraint.

R 1001 LC

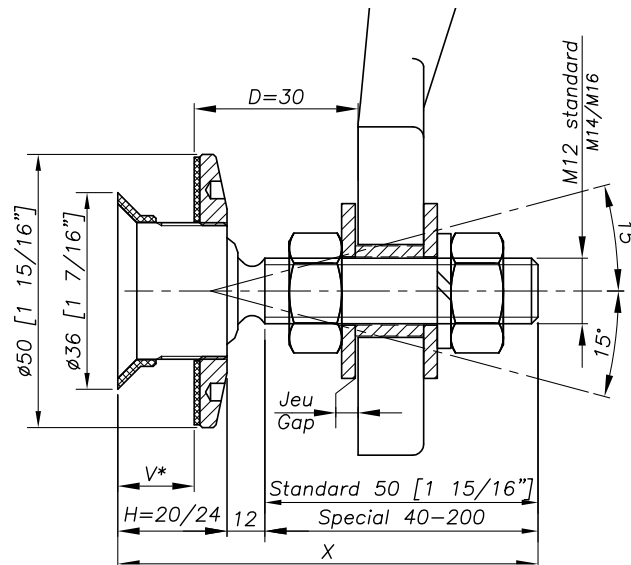
Designation : swivel fitting



REFERENCE TO ORDER			
GLASS THICKNESS	Ø AXIS	LENGTH AXIS (mm)	ARTICLE CODE
$8 \leq V \leq 14$	M12	50	R1001LC-01
$14 < V \leq 18$	M12	50	R1001LC-02
SPECIAL	SPECIAL	SPECIAL	R1101LC-SP

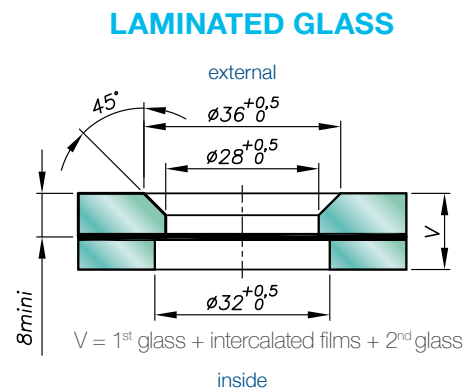
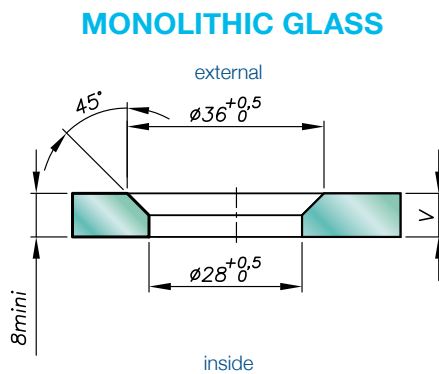
Patent No : 9806556
 Technical assessment available online : www.sadev.com
 Sealing strip between glazing available p.8.26

Dimensions



H = Swivel body corresponding to the thickness of the glass.
 V* = glass thickness

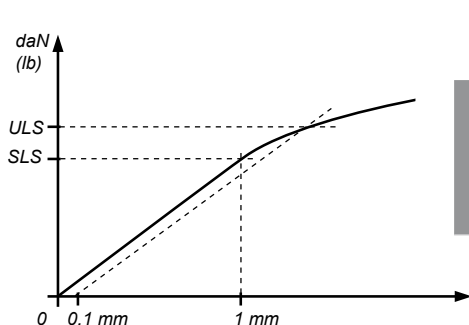
Glass drilling



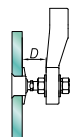
Available for glass thicknesses from 8 to 31.52 mm, for other thicknesses please consult us.

It is important to provide the following information with each request: the glass composition (ex.: 10 mm monolithic, 8.8.4 laminated, 8.8.2-12-10 insulating) / the length and diameter of the threaded axle if not standard dimensions (M14, 65 mm) / the reference of the spider to be used as support, or the thickness of an existing support for the delivery of the spacer.

Mechanical performance

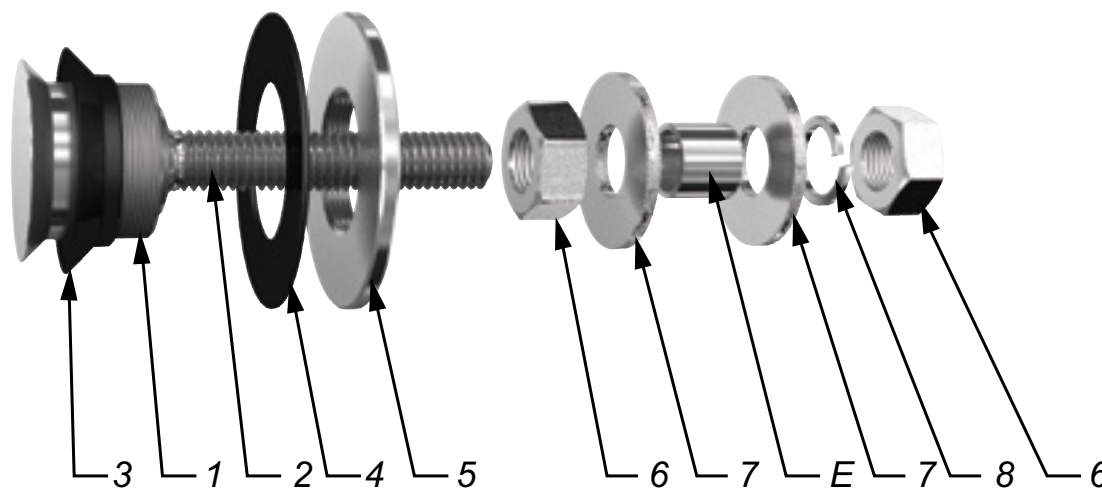


M12	BENDING CAPACITY				PULL OUT CAPACITY
	D	1 mm (SLS*)	2mm	RP 0,1 (ULS**)	RP 0,2
30 mm	170 daN (382 lb)	340daN (764 lb)	420 daN (944 lb)	450 daN (1011 lb)	1 200 daN (2697 lb)



*SLS : Serviceability limit state : Bending capacity à 1 mm
 **ULS : Ultimate limit state : Load at the elastic limit Rp0,1
 Values are given without factor of safety
 Tests available online : www.sadev.com

Components



MARK	QUANTITY	DESIGNATION	MATERIAL
1	1	Swivel body	X2 Cr Ni Mo 17.12.2 as per EN 10088-3
2	1	Threaded Axle	X4 Cr Ni Mo 16.5.1 as per EN 10088-3
3	1	Glass hole grommet	Polyacétal noir / polyéthylène noir
4	1	Contact washer	Polyacétal noir / polyéthylène noir
5	1	Glass nut Ø50	X2 Cr Ni Mo 17.12.2 as per EN 10088-3
6	2	Nut DIN 934	A4
7	2	Washer	A4
8	1	Lock washer DIN127	A4

Suggested mounting instruction

Insert parts N° 1/2 and 3 into the glass hole.

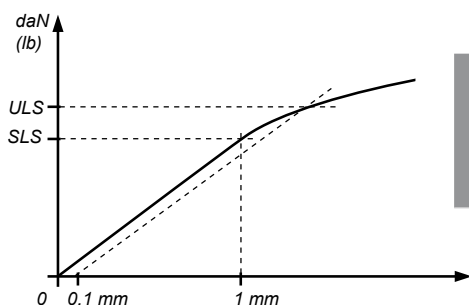
Mount the second contact washer N° 4 and glass nut N° 5 and tighten to 20Nm (15 ft-lb) for monolithic glass and 10Nm (7.5 ft-lb) for laminated glass using tools SADEV ref. 758-11-60.

Mount nut N° 6 and washer N° 7.

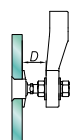
Insert the threaded axle into the support with spacer E (available on request), see technical page. Adjust the depth. Mount washer N° 7, lock washer N° 8, and nut N° 9 and tighten to 60Nm (45 ft-lb) using a 19mm wrench.

SADEV recommends using thread locking compound whenever possible.

Mechanical performance

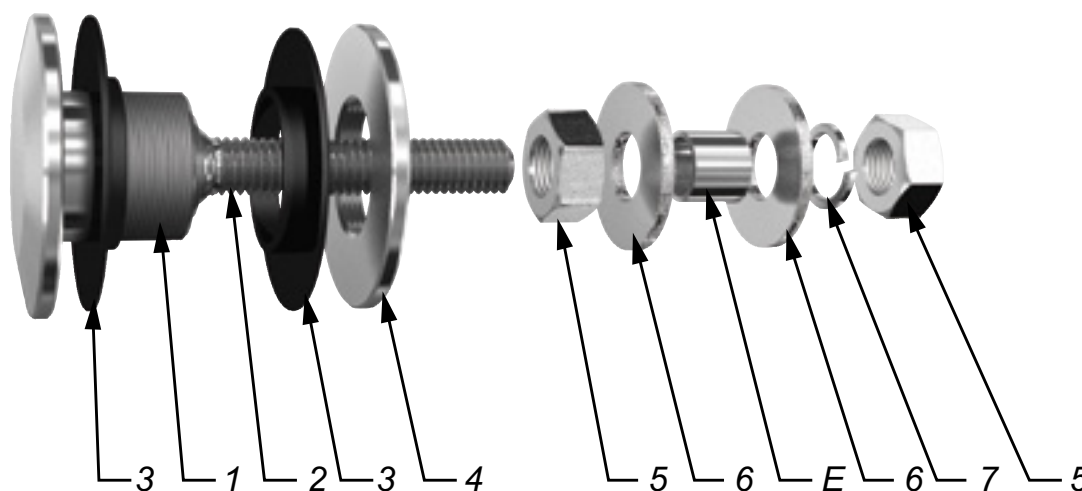


M12	BENDING CAPACITY				PULL OUT CAPACITY
	D	1 mm (SLS*)	2 mm	RP 0,1 (ULS**)	RP 0,2
30 mm	170 daN (382 lb)	340 daN (764 lb)	420 daN (944 lb)	450 daN (1011 lb)	1 200 daN (2697 lb)



*SLS : Serviceability limit state : Bending capacity à 1 mm
 **ULS : Ultimate limit state : Load at the elastic limit Rp0,1
 Values are given without factor of safety
 Tests available online : www.sadev.com

Components



MARK	QUANTITY	DESIGNATION	MATERIAL
1	1	Swivel body	X2 Cr Ni Mo 17.12.2 as per EN 10088-3
2	1	Threaded Axle	X4 Cr Ni Mo 16.5.1 as per EN 10088-3
3	2	Glass hole grommet	Polyacétal noir / polyéthylène noir
4	1	Glass nut Ø50	X2 Cr Ni Mo 17.12.2 as per EN 10088-3
5	2	Nut DIN 934	A4
6	2	Washer	A4
7	1	Lock washer DIN127	A4

Suggested mounting instruction

Insert parts N° 1/2 and 3 into the glass hole.

Mount the second contact washer N°3 and glass nut N°4 and tighten to 20Nm (15 ft-lb) for monolithic glass and 10Nm (7.5 ft-lb) for laminated glass using tools SADEV ref. 758-11-60.

Mount nut N°5 and washer N°6

Insert the threaded axle into the support with spacer E (available on request), see technical page. Adjust the depth. Mount washer N°6, lock washer N°7, and nut N°5 and tighten to 60Nm (45 ft-lb) using a 19mm wrench.

SADEV recommends using thread locking compound whenever possible.

R 1006 LC

Designation : swivel fitting, cylindrical head, Installation from the outside possible



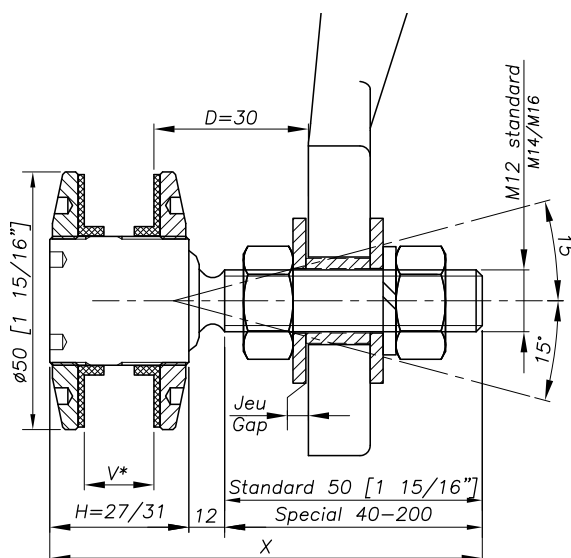
REFERENCE TO ORDER			
GLASS THICKNESS	Ø AXIS	LENGTH AXIS (mm)	ARTICLE CODE
$8 \leq V \leq 14$	M12	50	R1006LC-01
$14 < V \leq 18$	M12	50	R1006LC-02
SPECIAL	SPECIAL	SPECIAL	R1106LC-SP

Patent No : 9806556

Technical assessment available online : www.sadev.com

Sealing strip between glazing available p.8.26

Dimensions

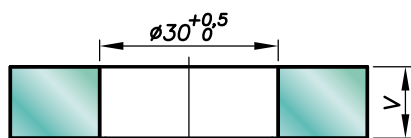


H = Swivel body corresponding to the thickness of the glass.

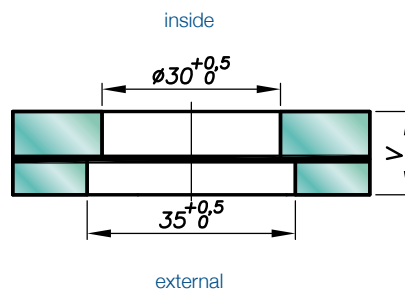
V* = glass thickness

Glass drilling

MONOLITHIC GLASS



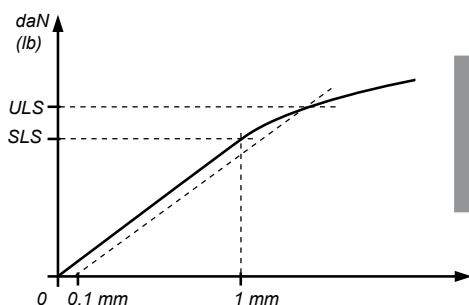
LAMINATED GLASS



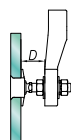
Available for glass thicknesses from 8 to 31.52 mm, for other thicknesses please consult us.

It is important to provide the following information with each request: the glass composition (ex.: 10 mm monolithic, 8.8.4 laminated, 8.8.2-12-10 insulating) / the length and diameter of the threaded axle if not standard dimensions (M14, 65 mm) / the reference of the spider to be used as support, or the thickness of an existing support for the delivery of the spacer.

Mechanical performance

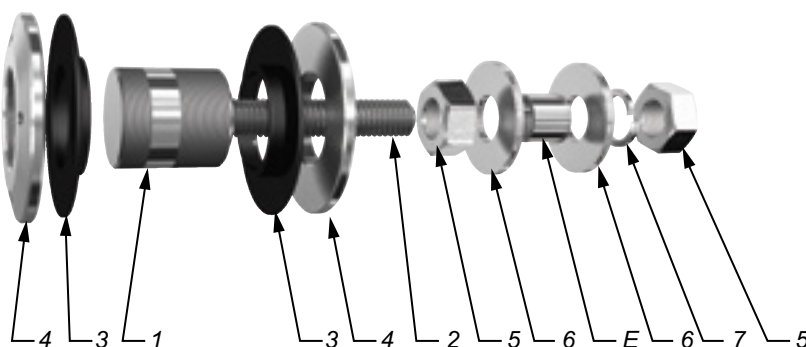


M12	BENDING CAPACITY				PULL OUT CAPACITY
	D	1 mm (SLS*)	2 mm	RP 0,1 (ULS**)	RP 0,2
30 mm	170 daN (382 lb)	340 daN (764 lb)	420 daN (944 lb)	450 daN (1011 lb)	1 200 daN (2 697 lb)



*SLS : Serviceability limit state : Bending capacity à 1 mm
 **ULS : Ultimate limit state : Load at the elastic limit Rp0,1
 Values are given without factor of safety
 Tests available online : www.sadev.com

Components

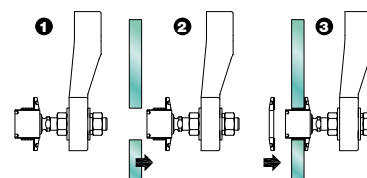


MARK	QUANTITY	DESIGNATION	MATERIAL
1	1	Swivel body	X2 Cr Ni Mo 17.12.2 as per EN 10088-3
2	1	Threaded Axle	X4 Cr Ni Mo 16.5.1 as per EN 10088-3
3	2	Glass hole grommet	Polyacétal noir / polyéthylène noir
4	2	Glass nut Ø50	X2 Cr Ni Mo 17.12.2 as per EN 10088-3
5	2	Nut DIN 934	A4
6	2	Washer	A4
7	1	Lock washer DIN127	A4

Suggested mounting instruction

A – Classic mounting

Insert parts N° 1, 2, 4 and 3 into the glass hole. Place the second contact washer N°3 over assembly N°2 and thread on glass nut N°4. Tighten to 20Nm for tempered glass using SADEV catalog ref. 758-11-60. Thread on nut N°5 and apply washer N°6. Insert the threaded axle into the support with spacer E (available on request), see technical page. Adjust the depth. Mount the second washer N°6, lock washer N°7, and nut N°5. Tighten to 60Nm (45 ft-lb) using a 19 mm wrench.



B – Blind mounting : installation from the outside (no access to the structure)

Mount nut N°5 and washer N°6 onto assembly N°1,2. Insert the threaded axle into the support with spacer E (available on request), see technical page. Adjust the depth. Mount the second washer N°6, lock washer N°7, and nut N°5. Tighten to 60Nm (45 ft-lb) using a 19mm wrench. Mount the glazing. Mount contact washer N°3 + plate N°4 and tighten to 20Nm for monolithic glass and 10Nm for laminated glass using SADEV catalog ref. 758-11-60.

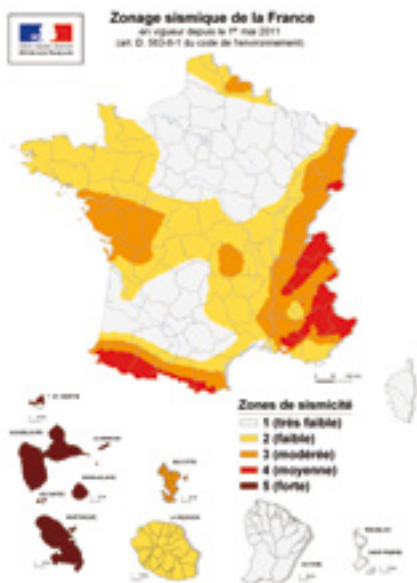
SADEV recommends using thread locking, except specific mounting constraint.

Options

Seismic

National regulations define seismic zones, building classes and soil classes. The use of Sadev swivel fitting labeled "seismic" framed areas and building categories defined in the table below. The effects of the seismic action should be taken into account for seismic zones and categories of buildings.

Extract the French regulation (notebook 3691_V2 of CSTB)



	CATEGORY OF THE STRUCTURE			
	I	II	III	IV
ZONE 1	without prescription	without prescription	without prescription	without prescription
ZONE 2	without prescription	without prescription	validated *	validated *
ZONE 3	without prescription	validated *	validated *	validated *
ZONE 4	without prescription	validated *	validated *	validated *
ZONE 5	validated *	validated *	validated *	validated *

* Under conditions : the validation according to the zone or category requires a suitable and tested Sadev product.

Building categories

The seismic location also depends on the type of building. For example, in France :

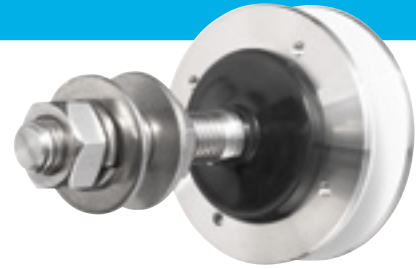
IMPORTANCE CATEGORY OF THE BUILDING	BUILDING TYPE	COEFFICIENT
I	See details in notebook 3691 of CSTB (French Institute)	0.8
II		1
III		1.2
IV		1.4

"Swivel fittings R1001, R1003, R1006, R1008 and spiders S3000, S3001 EVO, S3007 Sadev have successfully passed the seismic tests."



The Silicone Cover

SADEV provides a protection from elements in the form of a silicone cover. Attention, this cover is not a simple option that you can add later. It is imperative to order a swivel fitting marked «SO» for this option since the swivel body is bigger and the glass nut is accordingly adapted.



BBR swivel fittings

The swivel fittings R1003BBR and R1039BBR (BBR : Bomb Blast Resistant) were developed for protecting building occupants from blast effects is an international focus of current R&D. In order to allow the construction of safe and secure public buildings, a brand new and effective bolt fixed system has been developed for point fixed glass façades.

High quality, there high performance is confirmed by tests conducted in the UK (100kg of TNT to 25m). They are made in France from 316 stainless steel. The hinge angle at 20° with +/- with SADEV BBR system absorbs the impact of the explosion and deflection.



Insulating swivel fittings

Solar and thermal characteristics of glazing influence the energy performance of facades. Three components determine the coefficient and bioclimatic needs of a façade: heating, air conditioning and lighting. Sadev offers a range of swivel fitting R1001A, R1003A, R1039 with grommets for producing insulating facades in double or triple glazing.



